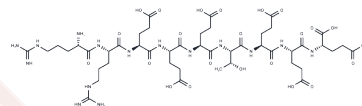


## Casein Kinase II Receptor Peptide

## Chemical Properties

CAS No. :	198481-81-1
Formula:	C46H75N15O23
Molecular Weight:	1206.17
Storage:	Keep away from moisture Powder: -20°C for 3 years   In solvent: -80°C for 1 year <small>Actual storage temperature shall be subject to the COA.</small>



## Biological Description

Description	Casein Kinase II Receptor Peptide, a substrate for casein kinase II, exhibits a Km value of 500 µM. It is utilized to measure the activity of casein kinase II in crude enzyme preparations [1].
Targets(IC50)	Casein Kinase

## Preparing Stock Solutions

	1mg	5mg	10mg
1 mM	0.8291 mL	4.1454 mL	8.2907 mL
5 mM	0.1658 mL	0.8291 mL	1.6581 mL
10 mM	0.0829 mL	0.4145 mL	0.8291 mL
50 mM	0.0166 mL	0.0829 mL	0.1658 mL

Please select the appropriate solvent to prepare the stock solution, according to the solubility of the product in different solvents. Please use it as soon as possible.

Note: The dilution table applies only to solid products. For liquid products, please calculate the stock solution based on the stated concentration and/or density.

**Inhibitor · Natural Compounds · Compound Libraries · Recombinant Proteins**

This product is for Research Use Only · Not for Human or Veterinary or Therapeutic Use

Tel:781-999-4286 E\_mail:info@targetmol.com Address:34 Washington Street,Wellesley Hills,MA 02481