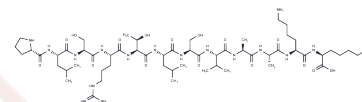


[Ala9,10, Lys11,12] Glycogen Synthase (1-12)

Chemical Properties

CAS No. :	105802-84-4
Formula:	C ₅₆ H ₁₀₃ N ₁₇ O ₁₆
Molecular Weight:	1270.52
Storage:	Keep away from moisture Powder: -20°C for 3 years In solvent: -80°C for 1 year <small>Actual storage temperature shall be subject to the COA.</small>



Biological Description

Description	[Glycogen Synthase (1-12) Ala9,10, Lys11,12] is a selective substrate for protein kinase C (PKC) phosphorylation. It serves to assess PKC activity [1].
Targets(IC50)	PKC

Preparing Stock Solutions

	1mg	5mg	10mg
1 mM	0.7871 mL	3.9354 mL	7.8708 mL
5 mM	0.1574 mL	0.7871 mL	1.5742 mL
10 mM	0.0787 mL	0.3935 mL	0.7871 mL
50 mM	0.0157 mL	0.0787 mL	0.1574 mL

Please select the appropriate solvent to prepare the stock solution, according to the solubility of the product in different solvents. Please use it as soon as possible.

Note: The dilution table applies only to solid products. For liquid products, please calculate the stock solution based on the stated concentration and/or density.

Inhibitor · Natural Compounds · Compound Libraries · Recombinant Proteins

This product is for Research Use Only · Not for Human or Veterinary or Therapeutic Use

Tel: 781-999-4286 E_mail: info@targetmol.com Address: 34 Washington Street, Wellesley Hills, MA 02481