

LH-RH (4-10)

## Chemical Properties

CAS No. : 51776-33-1

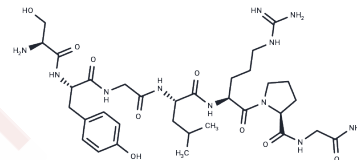
Formula: C33H53N11O9

Molecular Weight: 747.84

Keep away from moisture

Storage: Powder: -20°C for 3 years | In solvent: -80°C for 1 year

Actual storage temperature shall be subject to the COA.



## Biological Description

Description	LH-RH (4-10), a heptapeptide, represents one of the primary degradation products of luteinising-hormone releasing hormone (LHRH), occurring through the pathways of the pituitary and hypothalamus. It is produced in macrophages and type II pneumocytes [1].
Targets(IC50)	GNRH Receptor

## Preparing Stock Solutions

	1mg	5mg	10mg
1 mM	1.3372 mL	6.6859 mL	13.3718 mL
5 mM	0.2674 mL	1.3372 mL	2.6744 mL
10 mM	0.1337 mL	0.6686 mL	1.3372 mL
50 mM	0.0267 mL	0.1337 mL	0.2674 mL

Please select the appropriate solvent to prepare the stock solution, according to the solubility of the product in different solvents. Please use it as soon as possible.

Note: The dilution table applies only to solid products. For liquid products, please calculate the stock solution based on the stated concentration and/or density.

Inhibitor · Natural Compounds · Compound Libraries · Recombinant Proteins

This product is for Research Use Only · Not for Human or Veterinary or Therapeutic Use

Tel:781-999-4286

E\_mail:info@targetmol.com

Address:34 Washington Street,Wellesley Hills,MA 02481