

PE 22-28

Chemical Properties

CAS No. : 1801959-12-5

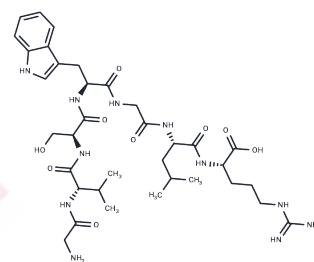
Formula: C₃₅H₅₅N₁₁O₉

Molecular Weight: 773.88

Keep away from moisture

Storage: Powder: -20°C for 3 years | In solvent: -80°C for 1 year

Actual storage temperature shall be subject to the COA.



Biological Description

Description	PE 22-28, a TREK-1 inhibitor exhibiting an IC ₅₀ value of 0.12 nM, is a 7 amino-acid peptide. It serves as a foundational sequence for the creation of analogs through chemical modifications and amino-acid substitution. This compound is utilized in depression research [1].
Targets(IC ₅₀)	Potassium Channel

Preparing Stock Solutions

	1mg	5mg	10mg
1 mM	1.2922 mL	6.461 mL	12.9219 mL
5 mM	0.2584 mL	1.2922 mL	2.5844 mL
10 mM	0.1292 mL	0.6461 mL	1.2922 mL
50 mM	0.0258 mL	0.1292 mL	0.2584 mL

Please select the appropriate solvent to prepare the stock solution, according to the solubility of the product in different solvents. Please use it as soon as possible.

Note: The dilution table applies only to solid products. For liquid products, please calculate the stock solution based on the stated concentration and/or density.

Inhibitor · Natural Compounds · Compound Libraries · Recombinant Proteins

This product is for Research Use Only · Not for Human or Veterinary or Therapeutic Use

Tel:781-999-4286 E_mail:info@targetmol.com Address:34 Washington Street,Wellesley Hills,MA 02481