

KGDS

Chemical Properties

CAS No. : 93674-95-4

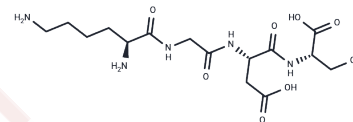
Formula: C₁₅H₂₇N₅O₈

Molecular Weight: 405.4

Keep away from moisture

Storage: Powder: -20°C for 3 years | In solvent: -80°C for 1 year

Actual storage temperature shall be subject to the COA.



Biological Description

Description	KGDS is a synthetic peptide that targets the integrin GPIIb-IIIa on the membrane of activated human platelets, with the amino acid sequence Lys-Gly-Asp-Ser [1].
Targets(IC50)	Integrin

Preparing Stock Solutions

	1mg	5mg	10mg
1 mM	2.4667 mL	12.3335 mL	24.667 mL
5 mM	0.4933 mL	2.4667 mL	4.9334 mL
10 mM	0.2467 mL	1.2333 mL	2.4667 mL
50 mM	0.0493 mL	0.2467 mL	0.4933 mL

Please select the appropriate solvent to prepare the stock solution, according to the solubility of the product in different solvents. Please use it as soon as possible.

Note: The dilution table applies only to solid products. For liquid products, please calculate the stock solution based on the stated concentration and/or density.

Inhibitor · Natural Compounds · Compound Libraries · Recombinant Proteins

This product is for Research Use Only · Not for Human or Veterinary or Therapeutic Use

Tel: 781-999-4286 E_mail: info@targetmol.com Address: 34 Washington Street, Wellesley Hills, MA 02481