

RNAENFDRF

## Chemical Properties

CAS No. : 2429946-75-6

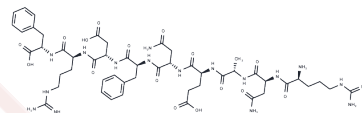
Formula: C50H73N17O16

Molecular Weight: 1168.22

Keep away from moisture

Storage: Powder: -20°C for 3 years | In solvent: -80°C for 1 year

Actual storage temperature shall be subject to the COA.



## Biological Description

Description	RNAENFDRF (βIIPKC624-632) conjugated to TAT47-57, a cell-permeable peptide, forms SAMβA, a rationally designed peptide that selectively antagonizes Mfn1-βIIPKC association. SAMβA acts as a selective inhibitor of mitofusin 1-βIIPKC association, demonstrating improved heart failure outcomes in rats [1].
Targets(IC50)	PKC

## Preparing Stock Solutions

	1mg	5mg	10mg
1 mM	0.856 mL	4.280 mL	8.560 mL
5 mM	0.1712 mL	0.856 mL	1.712 mL
10 mM	0.0856 mL	0.428 mL	0.856 mL
50 mM	0.0171 mL	0.0856 mL	0.1712 mL

Please select the appropriate solvent to prepare the stock solution, according to the solubility of the product in different solvents. Please use it as soon as possible.

Note: The dilution table applies only to solid products. For liquid products, please calculate the stock solution based on the stated concentration and/or density.

Inhibitor · Natural Compounds · Compound Libraries · Recombinant Proteins

This product is for Research Use Only · Not for Human or Veterinary or Therapeutic Use

Tel: 781-999-4286

E\_mail: info@targetmol.com

Address: 34 Washington Street, Wellesley Hills, MA 02481