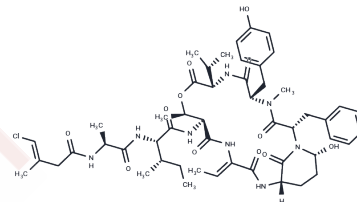


Tutuilamide A

Chemical Properties

CAS No. :	2756129-42-5
Formula:	C ₅₁ H ₆₉ ClN ₈ O ₁₂
Molecular Weight:	1021.59
Storage:	Keep away from moisture Powder: -20°C for 3 years In solvent: -80°C for 1 year <small>Actual storage temperature shall be subject to the COA.</small>



Biological Description

Description	Tutuilamide A, a potent inhibitor of porcine pancreatic elastase (PPE) with an IC ₅₀ of 1.2 nM, also effectively inhibits human neutrophil elastase (HNE; IC ₅₀ =0.73 nM) and kallikrein 7 (KLK7; IC ₅₀ =5.0 nM) [1].
-------------	--

Preparing Stock Solutions

	1mg	5mg	10mg
1 mM	0.9789 mL	4.8943 mL	9.7887 mL
5 mM	0.1958 mL	0.9789 mL	1.9577 mL
10 mM	0.0979 mL	0.4894 mL	0.9789 mL
50 mM	0.0196 mL	0.0979 mL	0.1958 mL

Please select the appropriate solvent to prepare the stock solution, according to the solubility of the product in different solvents. Please use it as soon as possible.

Note: The dilution table applies only to solid products. For liquid products, please calculate the stock solution based on the stated concentration and/or density.

Inhibitor · Natural Compounds · Compound Libraries · Recombinant Proteins

This product is for Research Use Only · Not for Human or Veterinary or Therapeutic Use

Tel:781-999-4286 E_mail:info@targetmol.com Address:34 Washington Street,Wellesley Hills,MA 02481