

## HA Peptide TFA

## Chemical Properties

CAS No. :

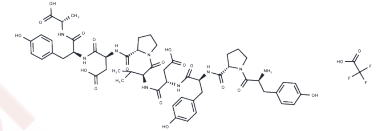
Formula: C55H68F3N9O19

Molecular Weight: 1216.19

Keep away from moisture

Storage: Powder: -20°C for 3 years | In solvent: -80°C for 1 year

Actual storage temperature shall be subject to the COA.



## Biological Description

|               |  |
|---------------|--|
| Description   | HA Peptide TFA is a nine-amino acid synthetic peptide derived from human influenza hemagglutinin (HA) that is widely applied in cell biology and biochemistry research for the isolation, purification, detection, and tracking of target proteins, serving as a versatile epitope tag and experimental reagent in protein expression and interaction studies. |
| Targets(IC50) | Others, Influenza Virus  |

## Solubility Information

|            |   |
|------------|---|
| Solubility | H2O: 40 mg/mL (32.89 mM), Sonication is recommended.<br>DMSO: ≥ 80 mg/mL, Sonication is recommended.<br>(< 1 mg/ml refers to the product slightly soluble or insoluble) |
|------------|---|

## Preparing Stock Solutions

|       | 1mg       | 5mg       | 10mg      |
|-------|-----------|-----------|-----------|
| 1 mM  | 0.8222 mL | 4.1112 mL | 8.2224 mL |
| 5 mM  | 0.1644 mL | 0.8222 mL | 1.6445 mL |
| 10 mM | 0.0822 mL | 0.4111 mL | 0.8222 mL |
| 50 mM | 0.0164 mL | 0.0822 mL | 0.1644 mL |

Please select the appropriate solvent to prepare the stock solution, according to the solubility of the product in different solvents. Please use it as soon as possible.

Note: The dilution table applies only to solid products. For liquid products, please calculate the stock solution based on the stated concentration and/or density.

Reference

Zhao X, et, al. Several affinity tags commonly used in chromatographic purification. J Anal Methods Chem. 2013; 2013:581093.

**Inhibitor · Natural Compounds · Compound Libraries · Recombinant Proteins**

This product is for Research Use Only· Not for Human or Veterinary or Therapeutic Use

Tel:781-999-4286 E\_mail:info@targetmol.com Address:34 Washington Street,Wellesley Hills,MA 02481