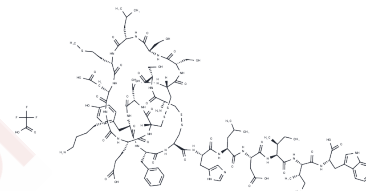


Endothelin 1 (swine, human) (TFA)

Chemical Properties

CAS No. :	394693-38-0
Formula:	C111H160F3N25O34S5
Molecular Weight:	2605.93
Storage:	Keep away from moisture Powder: -20°C for 3 years In solvent: -80°C for 1 year <small>Actual storage temperature shall be subject to the COA.</small>



Biological Description

Description	Endothelin 1 (swine, human) (TFA) is a synthetic peptide mirroring the sequence of the potent endogenous vasoconstrictor found in both human and swine Endothelin 1, operating via two receptor types, ET A and ET B [1].
Targets(IC50)	Endothelin Receptor

Preparing Stock Solutions

	1mg	5mg	10mg
1 mM	0.3837 mL	1.9187 mL	3.8374 mL
5 mM	0.0767 mL	0.3837 mL	0.7675 mL
10 mM	0.0384 mL	0.1919 mL	0.3837 mL
50 mM	0.0077 mL	0.0384 mL	0.0767 mL

Please select the appropriate solvent to prepare the stock solution, according to the solubility of the product in different solvents. Please use it as soon as possible.

Note: The dilution table applies only to solid products. For liquid products, please calculate the stock solution based on the stated concentration and/or density.

Inhibitor · Natural Compounds · Compound Libraries · Recombinant Proteins

This product is for Research Use Only · Not for Human or Veterinary or Therapeutic Use

Tel:781-999-4286 E_mail:info@targetmol.com Address:34 Washington Street,Wellesley Hills,MA 02481