

BIM-26226

Chemical Properties

CAS No. : 136207-23-3

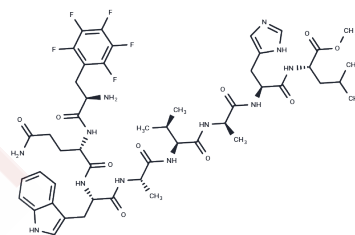
Formula: C49H63F5N12O10

Molecular Weight: 1075.09

Keep away from moisture

Storage: Powder: -20°C for 3 years | In solvent: -80°C for 1 year

Actual storage temperature shall be subject to the COA.



Biological Description

Description	BIM-26226, a gastrin-releasing peptide, serves as a potent and selective antagonist to the bombesin receptor, effectively inhibiting BN- or GRP-stimulated amylase release with IC50 values in the nanomolar range. It is utilized in cancer research [1] [2].
Targets(IC50)	Bombesin Receptor

Preparing Stock Solutions

	1mg	5mg	10mg
1 mM	0.9302 mL	4.6508 mL	9.3015 mL
5 mM	0.186 mL	0.9302 mL	1.8603 mL
10 mM	0.093 mL	0.4651 mL	0.9302 mL
50 mM	0.0186 mL	0.093 mL	0.186 mL

Please select the appropriate solvent to prepare the stock solution, according to the solubility of the product in different solvents. Please use it as soon as possible.

Note: The dilution table applies only to solid products. For liquid products, please calculate the stock solution based on the stated concentration and/or density.

Inhibitor · Natural Compounds · Compound Libraries · Recombinant Proteins

This product is for Research Use Only · Not for Human or Veterinary or Therapeutic Use

Tel:781-999-4286

E_mail:info@targetmol.com

Address:34 Washington Street,Wellesley Hills,MA 02481