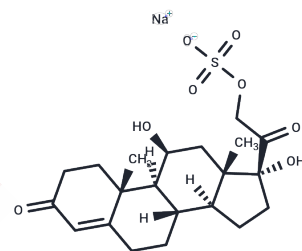


## Cortisol sulfate sodium

## Chemical Properties

CAS No. :	1852-36-4
Formula:	C <sub>21</sub> H <sub>29</sub> NaO <sub>8</sub> S
Molecular Weight:	464.51
Storage:	Powder: -20°C for 3 years   In solvent: -80°C for 1 year Actual storage temperature shall be subject to the COA.



## Biological Description

Description	Cortisol sulfate sodium (Cortisol 21-sulfate), a metabolite of Cortisol, serves as a specific ligand for intracellular transcortin [1][2][3].
Targets(IC50)	Others,Endogenous Metabolite

## Preparing Stock Solutions

	1mg	5mg	10mg
1 mM	2.1528 mL	10.764 mL	21.5281 mL
5 mM	0.4306 mL	2.1528 mL	4.3056 mL
10 mM	0.2153 mL	1.0764 mL	2.1528 mL
50 mM	0.0431 mL	0.2153 mL	0.4306 mL

Please select the appropriate solvent to prepare the stock solution, according to the solubility of the product in different solvents. Please use it as soon as possible.

Note: The dilution table applies only to solid products. For liquid products, please calculate the stock solution based on the stated concentration and/or density.

**Inhibitor · Natural Compounds · Compound Libraries · Recombinant Proteins**

This product is for Research Use Only · Not for Human or Veterinary or Therapeutic Use

Tel:781-999-4286 E\_mail:info@targetmol.com Address:34 Washington Street,Wellesley Hills,MA 02481