

Angoline hydrochloride

Chemical Properties

CAS No. : 1071676-04-4

Formula: C₂₂H₂₂ClNO₅

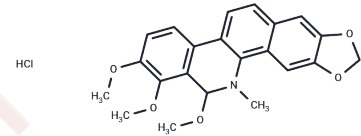
Molecular Weight: 415.87

Storage:

Keep away from direct sunlight, Keep away from moisture, Store at low temperature

Powder: -20°C for 3 years | In solvent: -80°C for 1 year

Actual storage temperature shall be subject to the COA.



Biological Description

Description	Angoline hydrochloride (6-Methoxyldihydrochelerythrine) is an IL-6/STAT3 signaling pathway inhibitor isolated from <i>Zanthoxylum nitidum</i> with anticancer activity and inhibits STAT3 signaling.
Targets(IC50)	STAT,IL Receptor
In vitro	Angoline hydrochloride acting in the range of 0 to 100 μ M for 1 hr was able to inhibit STAT3, STAT1 and NF- κ B signaling pathways with the IC50 of 11.56 μ M, >100 μ M and >100 μ M, respectively. Angoline hydrochloride acted in the range of 0 to 100 μ M for 2 hours and was able to affect the phosphorylation process of STAT3. Angoline hydrochloride acting in the range of 0 to 100 μ M for 72 hours was able to inhibit the proliferation of MDA-MB-231, H4 and HepG2 cells. [1]

Preparing Stock Solutions

	1mg	5mg	10mg
1 mM	2.4046 mL	12.023 mL	24.046 mL
5 mM	0.4809 mL	2.4046 mL	4.8092 mL
10 mM	0.2405 mL	1.2023 mL	2.4046 mL
50 mM	0.0481 mL	0.2405 mL	0.4809 mL

Please select the appropriate solvent to prepare the stock solution, according to the solubility of the product in different solvents. Please use it as soon as possible.

Note: The dilution table applies only to solid products. For liquid products, please calculate the stock solution based on the stated concentration and/or density.

Reference

Liu J, et al. Angoline: a selective IL-6/STAT3 signaling pathway inhibitor isolated from Zanthoxylum nitidum. Phytomedicine. 2014 Jul-Aug;21(8-9):1088-91.

Inhibitor · Natural Compounds · Compound Libraries · Recombinant Proteins

This product is for Research Use Only · Not for Human or Veterinary or Therapeutic Use

Tel:781-999-4286 E_mail:info@targetmol.com Address:34 Washington Street,Wellesley Hills,MA 02481