

Sorbifolin

Chemical Properties

CAS No. : 23130-22-5

Formula: C₁₆H₁₂O₆

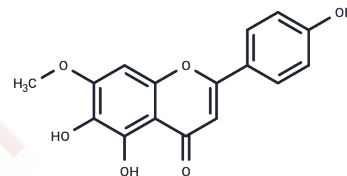
Molecular Weight: 300.26

Keep away from direct sunlight, Keep away from moisture

Storage:

Powder: -20°C for 3 years | In solvent: -80°C for 1 year

Actual storage temperature shall be subject to the COA.



Biological Description

| | |
|----------------------------|---|
| Description | Sorbifolin is a natural flavone glycoside and myeloperoxidase (MPO) inhibitor (IC ₅₀ =19.2 nM) exhibiting radical scavenging activity. |
| Targets(IC ₅₀) | Free radical scavengers, Glutathione Peroxidase |
| In vitro | Sorbifolin exhibited free radical scavenging activity after 30 minutes of action, with IC ₅₀ values of 5.7 μM and 13.5 μM against ABTS radicals and DPPH radicals, respectively [1]. |

Solubility Information

| | |
|------------|---|
| Solubility | DMSO: 80 mg/mL (266.44 mM), Sonication is recommended. (< 1 mg/ml refers to the product slightly soluble or insoluble) |
|------------|---|

Preparing Stock Solutions

| | 1mg | 5mg | 10mg |
|-------|-----------|------------|------------|
| 1 mM | 3.3304 mL | 16.6522 mL | 33.3045 mL |
| 5 mM | 0.6661 mL | 3.3304 mL | 6.6609 mL |
| 10 mM | 0.333 mL | 1.6652 mL | 3.3304 mL |
| 50 mM | 0.0666 mL | 0.333 mL | 0.6661 mL |

Please select the appropriate solvent to prepare the stock solution, according to the solubility of the product in different solvents. Please use it as soon as possible.

Note: The dilution table applies only to solid products. For liquid products, please calculate the stock solution based on the stated concentration and/or density.

Reference

Fernandes DC, et al. Myeloperoxidase inhibitory and radical scavenging activities of flavones from Pterogyne nitens. Chem Pharm Bull (Tokyo). 2008 May;56(5):723-6.

Inhibitor · Natural Compounds · Compound Libraries · Recombinant Proteins

This product is for Research Use Only. Not for Human or Veterinary or Therapeutic Use

Tel:781-999-4286 E_mail:info@targetmol.com Address:34 Washington Street,Wellesley Hills,MA 02481