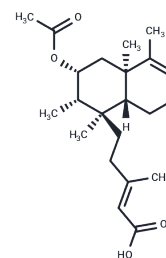


## Solidagonic acid

## Chemical Properties

|                   |   |
|-------------------|---|
| CAS No. :         | 19941-91-4  |
| Formula:          | C <sub>22</sub> H <sub>34</sub> O <sub>4</sub>  |
| Molecular Weight: | 362.5   |
| Storage:          | Powder: -20°C for 3 years   In solvent: -80°C for 1 year<br>Actual storage temperature shall be subject to the COA. |



## Biological Description

|               |   |
|---------------|---|
| Description   | Solidagonic acid, by inhibiting HSET motor activity, promotes the conversion of abnormal monopolar spindles to bipolar configurations, effectively suppressing fission yeast cell death and facilitating the mitotic spindles' reversion from monopolar to bipolar morphology. Additionally, this compound demonstrates growth inhibitory effects on the seedlings of <i>Lactuca sativa</i> L. and <i>Lolium multiflorum</i> Lam [1] [2]. |
| Targets(IC50) | Others, Kinesin   |

## Preparing Stock Solutions

|       | 1mg       | 5mg        | 10mg       |
|-------|-----------|------------|------------|
| 1 mM  | 2.7586 mL | 13.7931 mL | 27.5862 mL |
| 5 mM  | 0.5517 mL | 2.7586 mL  | 5.5172 mL  |
| 10 mM | 0.2759 mL | 1.3793 mL  | 2.7586 mL  |
| 50 mM | 0.0552 mL | 0.2759 mL  | 0.5517 mL  |

Please select the appropriate solvent to prepare the stock solution, according to the solubility of the product in different solvents. Please use it as soon as possible.

Note: The dilution table applies only to solid products. For liquid products, please calculate the stock solution based on the stated concentration and/or density.

Inhibitor · Natural Compounds · Compound Libraries · Recombinant Proteins

This product is for Research Use Only · Not for Human or Veterinary or Therapeutic Use

Tel: 781-999-4286 E\_mail: info@targetmol.com Address: 34 Washington Street, Wellesley Hills, MA 02481