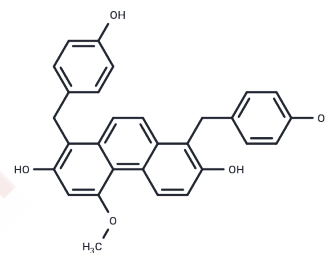


## BChE-IN-12

## Chemical Properties

CAS No. :	136966-86-4
Formula:	C <sub>31</sub> H <sub>30</sub> O <sub>5</sub>
Molecular Weight:	482.57
Storage:	Powder: -20°C for 3 years   In solvent: -80°C for 1 year Actual storage temperature shall be subject to the COA.



## Biological Description

Description	BChE-IN-12, also known as compound 12, is a potent non-competitive inhibitor of butyrylcholinesterase (BChE) with an IC <sub>50</sub> value of 2.3 μM. Derived from Bletilla striata, it is utilised in research related to Alzheimer's disease (AD) [1].
Targets(IC50)	Others,Cholinesterase (ChE)

## Preparing Stock Solutions

	1mg	5mg	10mg
1 mM	2.0722 mL	10.3612 mL	20.7224 mL
5 mM	0.4144 mL	2.0722 mL	4.1445 mL
10 mM	0.2072 mL	1.0361 mL	2.0722 mL
50 mM	0.0414 mL	0.2072 mL	0.4144 mL

Please select the appropriate solvent to prepare the stock solution, according to the solubility of the product in different solvents. Please use it as soon as possible.

Note: The dilution table applies only to solid products. For liquid products, please calculate the stock solution based on the stated concentration and/or density.

Inhibitor · Natural Compounds · Compound Libraries · Recombinant Proteins

This product is for Research Use Only · Not for Human or Veterinary or Therapeutic Use

Tel:781-999-4286 E\_mail:info@targetmol.com Address:34 Washington Street,Wellesley Hills,MA 02481