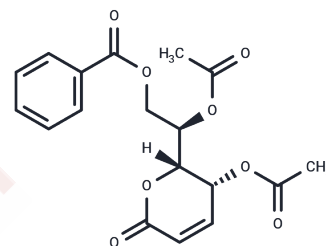


## (-)-Cleistenolide

## Chemical Properties

CAS No. :	1003600-48-3
Formula:	C <sub>18</sub> H <sub>18</sub> O <sub>8</sub>
Molecular Weight:	362.33
Storage:	Powder: -20°C for 3 years   In solvent: -80°C for 1 year Actual storage temperature shall be subject to the COA.



## Biological Description

Description	(-)-Cleistenolide, an $\alpha,\beta$ -unsaturated $\delta$ -lactone derived from <i>Cleistochlamys kirkii</i> Oliver, exhibits antibacterial and antitumor activity [1].
Targets(IC50)	Others, Antibacterial

## Preparing Stock Solutions

	1mg	5mg	10mg
1 mM	2.7599 mL	13.7996 mL	27.5991 mL
5 mM	0.552 mL	2.7599 mL	5.5198 mL
10 mM	0.276 mL	1.380 mL	2.7599 mL
50 mM	0.0552 mL	0.276 mL	0.552 mL

Please select the appropriate solvent to prepare the stock solution, according to the solubility of the product in different solvents. Please use it as soon as possible.

Note: The dilution table applies only to solid products. For liquid products, please calculate the stock solution based on the stated concentration and/or density.

Inhibitor · Natural Compounds · Compound Libraries · Recombinant Proteins

This product is for Research Use Only · Not for Human or Veterinary or Therapeutic Use

Tel: 781-999-4286 E\_mail: info@targetmol.com Address: 34 Washington Street, Wellesley Hills, MA 02481