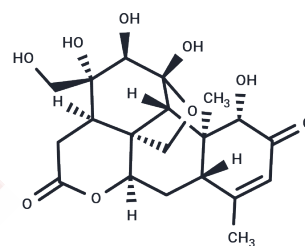


Shinjulactone M

Chemical Properties

CAS No. :	103630-27-9
Formula:	C ₂₀ H ₂₆ O ₉
Molecular Weight:	410.42
Storage:	Powder: -20°C for 3 years In solvent: -80°C for 1 year Actual storage temperature shall be subject to the COA.



Biological Description

Description	Shinjulactone M, a quassinoid extracted from the Ailanthus species of the Simaroubaceae family, serves as an antimalarial (febrifuge) and anthelmintic. It is also explored in the study of chronic bronchitis, epilepsy, and asthma [1].
Targets(IC50)	Others,Parasite

Preparing Stock Solutions

	1mg	5mg	10mg
1 mM	2.4365 mL	12.1826 mL	24.3653 mL
5 mM	0.4873 mL	2.4365 mL	4.8731 mL
10 mM	0.2437 mL	1.2183 mL	2.4365 mL
50 mM	0.0487 mL	0.2437 mL	0.4873 mL

Please select the appropriate solvent to prepare the stock solution, according to the solubility of the product in different solvents. Please use it as soon as possible.

Note: The dilution table applies only to solid products. For liquid products, please calculate the stock solution based on the stated concentration and/or density.

Inhibitor · Natural Compounds · Compound Libraries · Recombinant Proteins

This product is for Research Use Only · Not for Human or Veterinary or Therapeutic Use

Tel:781-999-4286 E_mail:info@targetmol.com Address:34 Washington Street,Wellesley Hills,MA 02481