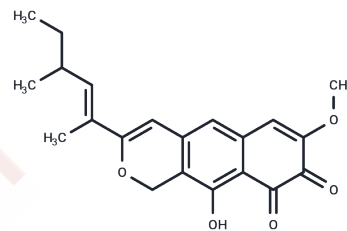


## Leptosphaerodione

## Chemical Properties

|                   |   |
|-------------------|---|
| CAS No. :         | 138039-33-5   |
| Formula:          | C <sub>21</sub> H <sub>22</sub> O <sub>5</sub>  |
| Molecular Weight: | 354.4   |
| Storage:          | Powder: -20°C for 3 years   In solvent: -80°C for 1 year<br>Actual storage temperature shall be subject to the COA. |



## Biological Description

|                            |   |
|----------------------------|---|
| Description                | Leptosphaerodione, a compound derived from the Remotididymella sp. fungus, functions as a potent inhibitor of the ubiquitin-proteasome system (UPS) and demonstrates cytotoxic effects in HeLa cells with an IC <sub>50</sub> value of 3.2 μM, classifying it as an anti-tumor agent [1]. |
| Targets(IC <sub>50</sub> ) | Others,Proteasome   |

## Preparing Stock Solutions

|       | 1mg       | 5mg        | 10mg       |
|-------|-----------|------------|------------|
| 1 mM  | 2.8217 mL | 14.1084 mL | 28.2167 mL |
| 5 mM  | 0.5643 mL | 2.8217 mL  | 5.6433 mL  |
| 10 mM | 0.2822 mL | 1.4108 mL  | 2.8217 mL  |
| 50 mM | 0.0564 mL | 0.2822 mL  | 0.5643 mL  |

Please select the appropriate solvent to prepare the stock solution, according to the solubility of the product in different solvents. Please use it as soon as possible.

Note: The dilution table applies only to solid products. For liquid products, please calculate the stock solution based on the stated concentration and/or density.

**Inhibitor · Natural Compounds · Compound Libraries · Recombinant Proteins**

This product is for Research Use Only · Not for Human or Veterinary or Therapeutic Use

Tel:781-999-4286 E\_mail:info@targetmol.com Address:34 Washington Street,Wellesley Hills,MA 02481