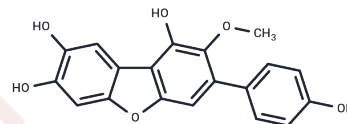


Peniterphenyl A

Chemical Properties

CAS No. : 2864816-15-7
 Formula: C19H14O6
 Molecular Weight: 338.31
 Storage: Powder: -20°C for 3 years | In solvent: -80°C for 1 year
 Actual storage temperature shall be subject to the COA.



Biological Description

Description	Peniterphenyl A, a deep-sea-derived <i>Penicillium</i> sp. natural product, exhibits inhibitory effects on HSV-1/2 virus entry into cells, potentially by directly interacting with the envelope glycoprotein D, disrupting virus adsorption and membrane fusion. This compound represents a promising lead against HSV-1/2 infection [1].
Targets(IC50)	Others,HSV

Preparing Stock Solutions

	1mg	5mg	10mg
1 mM	2.9559 mL	14.7793 mL	29.5587 mL
5 mM	0.5912 mL	2.9559 mL	5.9117 mL
10 mM	0.2956 mL	1.4779 mL	2.9559 mL
50 mM	0.0591 mL	0.2956 mL	0.5912 mL

Please select the appropriate solvent to prepare the stock solution, according to the solubility of the product in different solvents. Please use it as soon as possible.

Note: The dilution table applies only to solid products. For liquid products, please calculate the stock solution based on the stated concentration and/or density.

Inhibitor · Natural Compounds · Compound Libraries · Recombinant Proteins

This product is for Research Use Only · Not for Human or Veterinary or Therapeutic Use

Tel:781-999-4286 E_mail:info@targetmol.com Address:34 Washington Street,Wellesley Hills,MA 02481