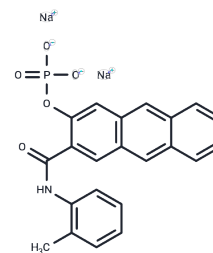


Naphthol AS-GR phosphate disodium

Chemical Properties

CAS No. :	100929-51-9
Formula:	C ₂₂ H ₁₆ NNa ₂ O ₅ P
Molecular Weight:	451.32
Storage:	Powder: -20°C for 3 years In solvent: -80°C for 1 year Actual storage temperature shall be subject to the COA.



Biological Description

Description	Naphthol AS-GR phosphate disodium, a substrate for both acid and alkaline phosphatases, exhibits intense green fluorescence, making it valuable for histochemical studies [1].
Targets(IC50)	Others,Phosphatase

Preparing Stock Solutions

	1mg	5mg	10mg
1 mM	2.2157 mL	11.0786 mL	22.1572 mL
5 mM	0.4431 mL	2.2157 mL	4.4314 mL
10 mM	0.2216 mL	1.1079 mL	2.2157 mL
50 mM	0.0443 mL	0.2216 mL	0.4431 mL

Please select the appropriate solvent to prepare the stock solution, according to the solubility of the product in different solvents. Please use it as soon as possible.

Note: The dilution table applies only to solid products. For liquid products, please calculate the stock solution based on the stated concentration and/or density.

Inhibitor · Natural Compounds · Compound Libraries · Recombinant Proteins

This product is for Research Use Only · Not for Human or Veterinary or Therapeutic Use

Tel:781-999-4286 E_mail:info@targetmol.com Address:34 Washington Street,Wellesley Hills,MA 02481