

TO-PRO 1

Chemical Properties

CAS No. : 157199-59-2

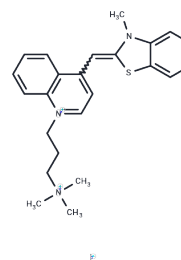
Formula: C₂₄H₂₉I₂N₃S

Molecular Weight: 645.38

Keep away from direct sunlight

Storage: Powder: -20°C for 3 years | In solvent: -80°C for 1 year

Actual storage temperature shall be subject to the COA.



Biological Description

Description	TO-PRO 1, a DNA-binding fluorochrome, is attached to the surface of Feraheme (FH) nanoparticles (NP) to create a fluorochrome-functionalized NP. It binds DNA via intercalation and serves as a crucial fluorochrome for identifying necrotic cells [1]. For storage, it is essential to protect it from light.
Targets(IC50)	Others, Autophagy

Preparing Stock Solutions

	1mg	5mg	10mg
1 mM	1.5495 mL	7.7474 mL	15.4947 mL
5 mM	0.3099 mL	1.5495 mL	3.0989 mL
10 mM	0.1549 mL	0.7747 mL	1.5495 mL
50 mM	0.031 mL	0.1549 mL	0.3099 mL

Please select the appropriate solvent to prepare the stock solution, according to the solubility of the product in different solvents. Please use it as soon as possible.

Note: The dilution table applies only to solid products. For liquid products, please calculate the stock solution based on the stated concentration and/or density.

Inhibitor · Natural Compounds · Compound Libraries · Recombinant Proteins

This product is for Research Use Only · Not for Human or Veterinary or Therapeutic Use

Tel: 781-999-4286

E_mail: info@targetmol.com

Address: 34 Washington Street, Wellesley Hills, MA 02481