

## KAT6-IN-1

## Chemical Properties

CAS No. : 2569008-99-5

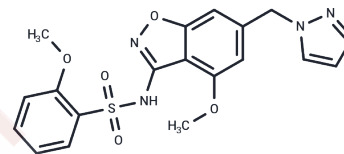
Formula: C<sub>19</sub>H<sub>18</sub>N<sub>4</sub>O<sub>5</sub>

Molecular Weight: 414.43

Store at low temperature

Storage: Powder: -20°C for 3 years | In solvent: -80°C for 1 year

Actual storage temperature shall be subject to the COA.



## Biological Description

Description	KAT6-IN-1 (compound E) is a selective, orally available inhibitor of histone acetyltransferases KAT6A and KAT6B, exhibiting antitumour activity for cancer research.
Targets(IC <sub>50</sub> )	Histone Acetyltransferase
In vitro	The combination of KAT6-IN-1 and Palbociclib exerts synergistic inhibitory effects on T47D, ZR-75-1, CAMA1, and MCF7 cancer cells [2].
In vivo	In the mouse ST340 Parazacco spilurus subsp. spilurus transplantation model, KAT6-IN-1 (3 mg/kg, orally administered once daily for 21 days) demonstrated antitumor activity [2].

## Solubility Information

Solubility	DMSO: 3 mg/mL (7.24 mM), Sonication is recommended. (< 1 mg/ml refers to the product slightly soluble or insoluble)
------------	--

## Preparing Stock Solutions

	1mg	5mg	10mg
1 mM	2.413 mL	12.0648 mL	24.1295 mL
5 mM	0.4826 mL	2.413 mL	4.8259 mL
10 mM	0.2413 mL	1.2065 mL	2.413 mL
50 mM	0.0483 mL	0.2413 mL	0.4826 mL

Please select the appropriate solvent to prepare the stock solution, according to the solubility of the product in different solvents. Please use it as soon as possible.

Note: The dilution table applies only to solid products. For liquid products, please calculate the stock solution based on the stated concentration and/or density.

Reference

Paul AS, et, al. Kat6 inhibitor methods and combinations for cancer treatment. WO2022013369.  
Stupple PA, et al., Kat6 inhibitor methods and combinations for cancer treatment. WO2022013369.

**Inhibitor · Natural Compounds · Compound Libraries · Recombinant Proteins**

This product is for Research Use Only · Not for Human or Veterinary or Therapeutic Use

Tel:781-999-4286 E\_mail:info@targetmol.com Address:34 Washington Street,Wellesley Hills,MA 02481