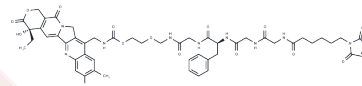


MC-GGFG-AM-(10Me-11F-Camptothecin)

Chemical Properties

| | |
|-------------------|---------------------------------------------------------------------------------------------------------------------|
| CAS No. : | 2873460-70-7 |
| Formula: | C51H56FN9O14 |
| Molecular Weight: | 1038.04 |
| Storage: | Powder: -20°C for 3 years In solvent: -80°C for 1 year Actual storage temperature shall be subject to the COA. |



Biological Description

| | |
|---------------|---------------------------------------------------------------------------------------------------------------------------------------------------------------------------------------------------------------------------------------------------------------------------------------------------------------------------------------------------------------------------------------------------------------------------------------------------------------------------------------------------------------------------------------------------------------------------------------------------------------------------------------------------------------|
| Description | MC-GGFG-AM-(10Me-11F-Camptothecin) serves as a linker-payload conjugate in the synthesis of ZW251, an antibody-drug conjugate (ADC) targeting human GPC3. ZW251 comprises a humanized IgG1 antibody linked to ZD06519, a novel camptothecin-based topoisomerase 1 inhibitor, through a maleimide-anchor and a cleavable glycyl glycyl phenylalanyl glycine (GGFG)-aminomethyl (AM) linker. ZW251 demonstrates strong affinity for GPC3 in both human and cynomolgus monkey cells, characterized by rapid internalization in GPC3-positive Hepatocellular Carcinoma (HCC) cell lines and induces bystander-mediated killing of GPC3-negative cancer cells [1]. |
| Targets(IC50) | Drug-Linker Conjugates for ADC,Topoisomerase |

Preparing Stock Solutions

| | 1mg | 5mg | 10mg |
|-------|-----------|-----------|-----------|
| 1 mM | 0.9634 mL | 4.8168 mL | 9.6335 mL |
| 5 mM | 0.1927 mL | 0.9634 mL | 1.9267 mL |
| 10 mM | 0.0963 mL | 0.4817 mL | 0.9634 mL |
| 50 mM | 0.0193 mL | 0.0963 mL | 0.1927 mL |

Please select the appropriate solvent to prepare the stock solution, according to the solubility of the product in different solvents. Please use it as soon as possible.

Note: The dilution table applies only to solid products. For liquid products, please calculate the stock solution based on the stated concentration and/or density.

Inhibitor · Natural Compounds · Compound Libraries · Recombinant Proteins

This product is for Research Use Only · Not for Human or Veterinary or Therapeutic Use

Tel:781-999-4286 E_mail:info@targetmol.com Address:34 Washington Street,Wellesley Hills,MA 02481