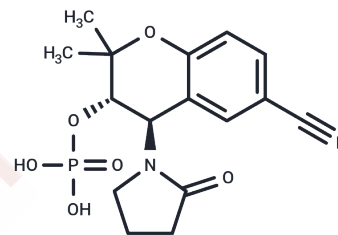


Foslevcromakalim

Chemical Properties

CAS No. :	1802655-72-6
Formula:	C ₁₆ H ₁₉ N ₂ O ₆ P
Molecular Weight:	366.31
Storage:	Store at low temperature Powder: -20°C for 3 years In solvent: -80°C for 1 year <small>Actual storage temperature shall be subject to the COA.</small>



Biological Description

Description	Foslevcromakalim (QLS-101) is an adenosine triphosphate-sensitive potassium channel (KATP) opener that is converted to its active form by alkaline phosphatase in vivo. It reduces intraocular pressure in normotensive mice and is suitable for glaucoma research.
Targets(IC50)	Potassium Channel

Solubility Information

Solubility	DMSO: 50 mg/mL (136.5 mM), Sonication is recommended. (< 1 mg/ml refers to the product slightly soluble or insoluble)
------------	--

Preparing Stock Solutions

	1mg	5mg	10mg
1 mM	2.7299 mL	13.6496 mL	27.2993 mL
5 mM	0.546 mL	2.7299 mL	5.4599 mL
10 mM	0.273 mL	1.365 mL	2.7299 mL
50 mM	0.0546 mL	0.273 mL	0.546 mL

Please select the appropriate solvent to prepare the stock solution, according to the solubility of the product in different solvents. Please use it as soon as possible.

Note: The dilution table applies only to solid products. For liquid products, please calculate the stock solution based on the stated concentration and/or density.

Reference

Pervan-Steel CL, et al. Ocular Hypotensive Properties and Biochemical Profile of QLS-101, a Novel ATP-Sensitive Potassium (KATP) Channel Opening Prodrug. Invest Ophthalmol Vis Sci. 2022 Apr 1;63(4):26.

Inhibitor · Natural Compounds · Compound Libraries · Recombinant Proteins

This product is for Research Use Only · Not for Human or Veterinary or Therapeutic Use

Tel:781-999-4286 E_mail:info@targetmol.com Address:34 Washington Street,Wellesley Hills,MA 02481