

AcrB-IN-2

Chemical Properties

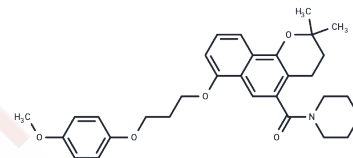
CAS No. : 2890177-90-7

Formula: C30H35NO6

Molecular Weight: 505.60

Storage: Powder: -20°C for 3 years | In solvent: -80°C for 1 year

Actual storage temperature shall be subject to the COA.



Biological Description

Description	Efflux pump-IN-2 is an AcrB efflux pump inhibitor that potentiates the effect of antibiotics and inhibits Nile Red (a known substrate of AcrB) efflux. Efflux pump-IN-2 does not disrupt the bacterial outer membrane nor display toxicity in a nematode model [1].
Targets(IC50)	Others,Antibacterial,Parasite

Preparing Stock Solutions

	1mg	5mg	10mg
1 mM	1.9778 mL	9.8892 mL	19.7785 mL
5 mM	0.3956 mL	1.9778 mL	3.9557 mL
10 mM	0.1978 mL	0.9889 mL	1.9778 mL
50 mM	0.0396 mL	0.1978 mL	0.3956 mL

Please select the appropriate solvent to prepare the stock solution, according to the solubility of the product in different solvents. Please use it as soon as possible.

Note: The dilution table applies only to solid products. For liquid products, please calculate the stock solution based on the stated concentration and/or density.

Inhibitor · Natural Compounds · Compound Libraries · Recombinant Proteins

This product is for Research Use Only · Not for Human or Veterinary or Therapeutic Use

Tel:781-999-4286

E_mail:info@targetmol.com

Address:34 Washington Street,Wellesley Hills,MA 02481