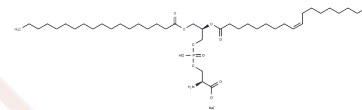


18:0, 18:1 PS sodium

Chemical Properties

| | |
|-------------------|---|
| CAS No. : | 321883-23-2 |
| Formula: | C42H79NNaO10P |
| Molecular Weight: | 812.04 |
| Storage: | Keep away from moisture Powder: -20°C for 3 years In solvent: -80°C for 1 year <small>Actual storage temperature shall be subject to the COA.</small> |



Biological Description

| | |
|---------------|--|
| Description | 18:0, 18:1 PS sodium is a common phosphatidylserine molecule containing one saturated fatty acid (18:0) and one monounsaturated fatty acid (18:1). 18:0, 18:1 PS sodium is a component of synaptic vesicles and cholesterol lipids and can be used in metabolic studies. |
| Targets(IC50) | Endogenous Metabolite |

Preparing Stock Solutions

| | 1mg | 5mg | 10mg |
|-------|-----------|-----------|------------|
| 1 mM | 1.2315 mL | 6.1573 mL | 12.3147 mL |
| 5 mM | 0.2463 mL | 1.2315 mL | 2.4629 mL |
| 10 mM | 0.1231 mL | 0.6157 mL | 1.2315 mL |
| 50 mM | 0.0246 mL | 0.1231 mL | 0.2463 mL |

Please select the appropriate solvent to prepare the stock solution, according to the solubility of the product in different solvents. Please use it as soon as possible.

Note: The dilution table applies only to solid products. For liquid products, please calculate the stock solution based on the stated concentration and/or density.

Reference

Fealey ME, et al. Synaptotagmin I's Intrinsically Disordered Region Interacts with Synaptic Vesicle Lipids and Exerts Allosteric Control over C2A. *Biochemistry*. 2016 May 31;55(21):2914-26.

Inhibitor · Natural Compounds · Compound Libraries · Recombinant Proteins

This product is for Research Use Only · Not for Human or Veterinary or Therapeutic Use

Tel:781-999-4286 E_mail:info@targetmol.com Address:34 Washington Street,Wellesley Hills,MA 02481