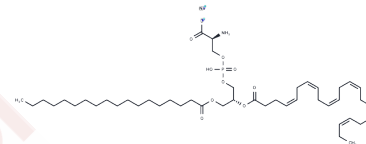


18:0,22:6 PS sodium

Chemical Properties

CAS No. : 474943-18-5
 Formula: C₄₆H₇₇NNaO₁₀P
 Molecular Weight: 858.07
 Storage: Powder: -20°C for 3 years | In solvent: -80°C for 1 year
 Actual storage temperature shall be subject to the COA.



Biological Description

| | |
|---------------|---|
| Description | Sodium 18:0,22:6 phosphatidylserine (PS) is a lipid found within synaptic vesicles alongside cholesterol, utilized in metabolic research [1]. |
| Targets(IC50) | Others,Endogenous Metabolite |

Preparing Stock Solutions

| | 1mg | 5mg | 10mg |
|-------|-----------|-----------|------------|
| 1 mM | 1.1654 mL | 5.827 mL | 11.6541 mL |
| 5 mM | 0.2331 mL | 1.1654 mL | 2.3308 mL |
| 10 mM | 0.1165 mL | 0.5827 mL | 1.1654 mL |
| 50 mM | 0.0233 mL | 0.1165 mL | 0.2331 mL |

Please select the appropriate solvent to prepare the stock solution, according to the solubility of the product in different solvents. Please use it as soon as possible.

Note: The dilution table applies only to solid products. For liquid products, please calculate the stock solution based on the stated concentration and/or density.

Inhibitor · Natural Compounds · Compound Libraries · Recombinant Proteins

This product is for Research Use Only · Not for Human or Veterinary or Therapeutic Use

Tel:781-999-4286 E_mail:info@targetmol.com Address:34 Washington Street,Wellesley Hills,MA 02481