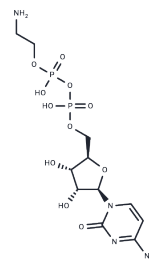


## Cytidine 5'-diphosphoethanolamine

## Chemical Properties

CAS No. :	3036-18-8
Formula:	C <sub>11</sub> H <sub>20</sub> N <sub>4</sub> O <sub>11</sub> P <sub>2</sub>
Molecular Weight:	446.24
Storage:	Powder: -20°C for 3 years   In solvent: -80°C for 1 year Actual storage temperature shall be subject to the COA.



## Biological Description

Description	Cytidine 5'-diphosphoethanolamine, a key intermediate in phosphatidylethanolamine synthesis, also serves as a stimulant of Ach synthesis [1].
Targets(IC50)	Others,Cholinesterase (ChE)

## Preparing Stock Solutions

	1mg	5mg	10mg
1 mM	2.2409 mL	11.2047 mL	22.4095 mL
5 mM	0.4482 mL	2.2409 mL	4.4819 mL
10 mM	0.2241 mL	1.1205 mL	2.2409 mL
50 mM	0.0448 mL	0.2241 mL	0.4482 mL

Please select the appropriate solvent to prepare the stock solution, according to the solubility of the product in different solvents. Please use it as soon as possible.

Note: The dilution table applies only to solid products. For liquid products, please calculate the stock solution based on the stated concentration and/or density.

Inhibitor · Natural Compounds · Compound Libraries · Recombinant Proteins

This product is for Research Use Only · Not for Human or Veterinary or Therapeutic Use

Tel:781-999-4286 E\_mail:info@targetmol.com Address:34 Washington Street,Wellesley Hills,MA 02481