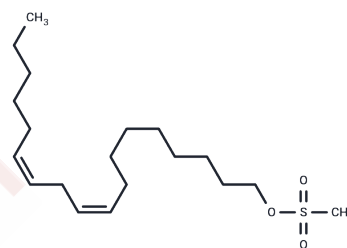


Linoleyl methane sulfonate

Chemical Properties

CAS No. : 51154-39-3
 Formula: C₁₉H₃₆O₃S
 Molecular Weight: 344.55
 Storage: Powder: -20°C for 3 years | In solvent: -80°C for 1 year
 Actual storage temperature shall be subject to the COA.



Biological Description

Description	Linoleyl methane sulfonate, a selective lipid-based vehicle, is utilized in drug delivery systems [1].
Targets(IC50)	Others,Liposome

Preparing Stock Solutions

	1mg	5mg	10mg
1 mM	2.9023 mL	14.5117 mL	29.0234 mL
5 mM	0.5805 mL	2.9023 mL	5.8047 mL
10 mM	0.2902 mL	1.4512 mL	2.9023 mL
50 mM	0.058 mL	0.2902 mL	0.5805 mL

Please select the appropriate solvent to prepare the stock solution, according to the solubility of the product in different solvents. Please use it as soon as possible.

Note: The dilution table applies only to solid products. For liquid products, please calculate the stock solution based on the stated concentration and/or density.

Inhibitor · Natural Compounds · Compound Libraries · Recombinant Proteins

This product is for Research Use Only· Not for Human or Veterinary or Therapeutic Use

Tel:781-999-4286 E_mail:info@targetmol.com Address:34 Washington Street,Wellesley Hills,MA 02481