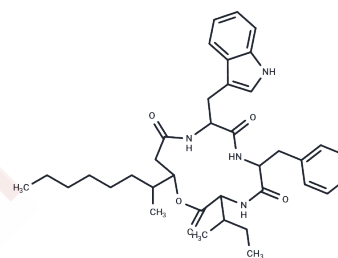


## Beauverolide Ka

## Chemical Properties

CAS No. : 76265-42-4  
 Formula: C37H50N4O5  
 Molecular Weight: 630.82  
 Storage: Powder: -20°C for 3 years | In solvent: -80°C for 1 year  
 Actual storage temperature shall be subject to the COA.



## Biological Description

Description	Beauverolide Ka, a cyclotetrapeptide derived from the Beauveria bassiana fungus, enhances glucose absorption in rat L6 myoblasts cultured at a concentration of 50 $\mu$ M and exhibits protective effects on HEI-OC1 cells at 10 $\mu$ M. It demonstrates dose-dependent activities in both L6 myoblasts and myotubes [1] [2].
Targets(IC50)	Others,Endogenous Metabolite

## Preparing Stock Solutions

	1mg	5mg	10mg
1 mM	1.5852 mL	7.9262 mL	15.8524 mL
5 mM	0.317 mL	1.5852 mL	3.1705 mL
10 mM	0.1585 mL	0.7926 mL	1.5852 mL
50 mM	0.0317 mL	0.1585 mL	0.317 mL

Please select the appropriate solvent to prepare the stock solution, according to the solubility of the product in different solvents. Please use it as soon as possible.

Note: The dilution table applies only to solid products. For liquid products, please calculate the stock solution based on the stated concentration and/or density.

Inhibitor · Natural Compounds · Compound Libraries · Recombinant Proteins

This product is for Research Use Only · Not for Human or Veterinary or Therapeutic Use

Tel:781-999-4286 E\_mail:info@targetmol.com Address:34 Washington Street,Wellesley Hills,MA 02481