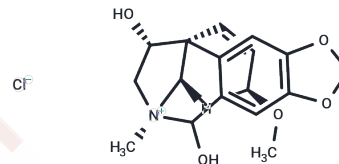


## N-Methylhemeanthidine chloride

## Chemical Properties

CAS No. :	1807688-81-8
Formula:	C <sub>18</sub> H <sub>22</sub> ClNO <sub>5</sub>
Molecular Weight:	367.82
Storage:	Powder: -20°C for 3 years   In solvent: -80°C for 1 year Actual storage temperature shall be subject to the COA.



## Biological Description

Description	N-Methylhemeanthidine chloride, an alkaloid derived from <i>Zephyranthes candida</i> of the Amaryllidaceae family, exhibits antitumor properties. It hinders cancer cell proliferation by down-regulating AKT activation, enforcing cell cycle arrest, and promoting apoptosis [1].
Targets(IC50)	Others

## Preparing Stock Solutions

	1mg	5mg	10mg
1 mM	2.7187 mL	13.5936 mL	27.1872 mL
5 mM	0.5437 mL	2.7187 mL	5.4374 mL
10 mM	0.2719 mL	1.3594 mL	2.7187 mL
50 mM	0.0544 mL	0.2719 mL	0.5437 mL

Please select the appropriate solvent to prepare the stock solution, according to the solubility of the product in different solvents. Please use it as soon as possible.

Note: The dilution table applies only to solid products. For liquid products, please calculate the stock solution based on the stated concentration and/or density.

Inhibitor · Natural Compounds · Compound Libraries · Recombinant Proteins

This product is for Research Use Only · Not for Human or Veterinary or Therapeutic Use

Tel:781-999-4286 E\_mail:info@targetmol.com Address:34 Washington Street,Wellesley Hills,MA 02481