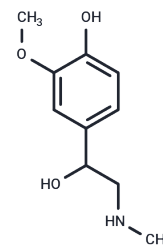


Metanephrine

Chemical Properties

CAS No. :	5001-33-2
Formula:	C10H15NO3
Molecular Weight:	197.23
Storage:	Keep away from direct sunlight, Keep away from moisture Powder: -20°C for 3 years In solvent: -80°C for 1 year <small>Actual storage temperature shall be subject to the COA.</small>



Biological Description

Description	Metanephrine is an o-methylated metabolite of catecholamines and can be used as a marker for different hereditary pheochromocytomas.
Targets(IC50)	Others, Endogenous Metabolite

Solubility Information

Solubility	DMSO: 33.3 mg/mL (168.84 mM), Sonication is recommended. (< 1 mg/ml refers to the product slightly soluble or insoluble)
------------	--

Preparing Stock Solutions

	1mg	5mg	10mg
1 mM	5.0702 mL	25.3511 mL	50.7022 mL
5 mM	1.014 mL	5.0702 mL	10.1404 mL
10 mM	0.507 mL	2.5351 mL	5.0702 mL
50 mM	0.1014 mL	0.507 mL	1.014 mL

Please select the appropriate solvent to prepare the stock solution, according to the solubility of the product in different solvents. Please use it as soon as possible.

Note: The dilution table applies only to solid products. For liquid products, please calculate the stock solution based on the stated concentration and/or density.

Reference

- Eisenhofer G, et al. Measurements of plasma methoxytyramine, normetanephrine, and metanephrine as discriminators of different hereditary forms of pheochromocytoma. Clin Chem. 2011 Mar;57(3):411-20.
- Martel F, et al. Comparison between uptake2 and rOCT1: effects of catecholamines, metanephrines and corticosterone. Naunyn Schmiedebergs Arch Pharmacol. 1999 Apr;359(4):303-9.

Inhibitor · Natural Compounds · Compound Libraries · Recombinant Proteins

This product is for Research Use Only · Not for Human or Veterinary or Therapeutic Use

Tel:781-999-4286 E_mail:info@targetmol.com Address:34 Washington Street,Wellesley Hills,MA 02481