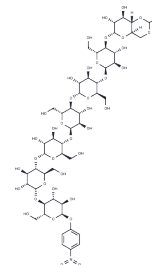


Ethylidene-4-nitrophenyl- $\alpha$ -D-Maltoheptaoside

## Chemical Properties

CAS No. :	96597-16-9
Formula:	C <sub>50</sub> H <sub>77</sub> N <sub>3</sub> O <sub>38</sub>
Molecular Weight:	1300.13
Storage:	Keep away from direct sunlight Powder: -20°C for 3 years   In solvent: -80°C for 1 year <i>Actual storage temperature shall be subject to the COA.</i>



## Biological Description

Description	Ethylidene-4-nitrophenyl- $\alpha$ -D-Maltoheptaoside (pNP-G7) is a substrate for $\alpha$ -amylase, used to measure $\alpha$ -amylase activity.
Targets(IC50)	Others,Amylase

## Solubility Information

Solubility	DMSO: 125 mg/mL (96.14 mM),Sonication is recommended. ( $< 1$ mg/ml refers to the product slightly soluble or insoluble)
In vivo Formulation	10% DMSO+40% PEG300+5% Tween 80+45% Saline: 3.3 mg/mL (2.54 mM),Sonication is recommended. 10% DMSO+90% Saline: 10 mg/mL (7.69 mM),Solution. <i>Please add the solvents sequentially, clarifying the solution as much as possible before adding the next one. Dissolve by heating and/or sonication if necessary. Working solution is recommended to be prepared and used immediately. The formulation provided above is for reference purposes only. In vivo formulations may vary and should be modified based on specific experimental conditions.</i>

## Preparing Stock Solutions

	1mg	5mg	10mg
1 mM	0.7692 mL	3.8458 mL	7.6915 mL
5 mM	0.1538 mL	0.7692 mL	1.5383 mL
10 mM	0.0769 mL	0.3846 mL	0.7692 mL
50 mM	0.0154 mL	0.0769 mL	0.1538 mL

Please select the appropriate solvent to prepare the stock solution, according to the solubility of the product in different solvents. Please use it as soon as possible.

Note: The dilution table applies only to solid products. For liquid products, please calculate the stock solution based on the stated concentration and/or density.

Reference

Lorentz K. Routine alpha-amylase assay using protected 4-nitrophenyl-1, 4-alpha-D-maltoheptaoside and a novel alpha-glucosidase. Clin Chem. 2000 May;46(5):644-9.

**Inhibitor · Natural Compounds · Compound Libraries · Recombinant Proteins**

This product is for Research Use Only. Not for Human or Veterinary or Therapeutic Use

Tel:781-999-4286 E\_mail:info@targetmol.com Address:34 Washington Street,Wellesley Hills,MA 02481