

## Risperidone-D4

## Chemical Properties

CAS No. : 1020719-76-9

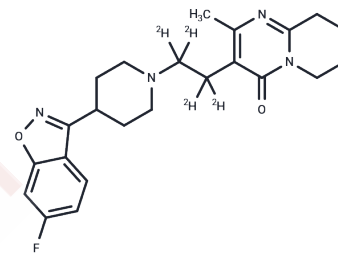
Formula: C<sub>23</sub>H<sub>23</sub>D<sub>4</sub>FN<sub>4</sub>O<sub>2</sub>

Molecular Weight: 414.51

Storage: Keep away from moisture, Keep away from direct sunlight

Powder: -20°C for 3 years | In solvent: -80°C for 1 year

Actual storage temperature shall be subject to the COA.



## Biological Description

Description	Risperidone-D4 is a deuterated form of risperidone. Risperidone (T0351) blocks 5-HT <sub>2</sub> receptors, inhibits P-glycoprotein, and antagonizes dopamine D <sub>2</sub> receptors (K <sub>i</sub> 4.8 / 5.9 nM for 5-HT <sub>2A</sub> / D <sub>2</sub> ), showing potential in research related to neuroscience.
Targets(IC50)	5-HT Receptor, Dopamine Receptor, P-gp

## Solubility Information

Solubility	DMSO: 8 mg/mL (19.3 mM), Sonication is recommended. (< 1 mg/ml refers to the product slightly soluble or insoluble)
------------	--

## Preparing Stock Solutions

	1mg	5mg	10mg
1 mM	2.4125 mL	12.0624 mL	24.1249 mL
5 mM	0.4825 mL	2.4125 mL	4.825 mL
10 mM	0.2412 mL	1.2062 mL	2.4125 mL
50 mM	0.0482 mL	0.2412 mL	0.4825 mL

Please select the appropriate solvent to prepare the stock solution, according to the solubility of the product in different solvents. Please use it as soon as possible.

Note: The dilution table applies only to solid products. For liquid products, please calculate the stock solution based on the stated concentration and/or density.

Reference

Russak EM, et al. Impact of Deuterium Substitution on the Pharmacokinetics of Pharmaceuticals. *Ann Pharmacother.* 2019;53(2):211-216.

Nyberg S, Farde L, Eriksson L, Halldin C, Eriksson B. 5-HT<sub>2</sub> and D<sub>2</sub> dopamine receptor occupancy in the living human brain. A PET study with risperidone. *Psychopharmacology (Berl).* 1993;110(3):265-72.

**Inhibitor · Natural Compounds · Compound Libraries · Recombinant Proteins**

This product is for Research Use Only · Not for Human or Veterinary or Therapeutic Use

Tel:781-999-4286 E\_mail:info@targetmol.com Address:34 Washington Street,Wellesley Hills,MA 02481