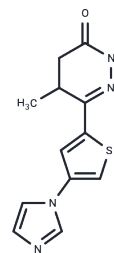


Motapizone

Chemical Properties

CAS No. :	90697-57-7
Formula:	C ₁₂ H ₁₂ N ₄ O ₅
Molecular Weight:	260.32
Storage:	Powder: -20°C for 3 years In solvent: -80°C for 1 year Actual storage temperature shall be subject to the COA.



Biological Description

Description	Motapizone (NAT 05-239) is a selective PDE3 inhibitor that suppresses cytokine release in LPS-induced human alveolar macrophages, increases intracellular cAMP, and inhibits human platelet aggregation.
Targets(IC50)	cAMP,Others,Platelet aggregation,PDE
In vitro	When administered at a concentration of 10 μM 15 minutes before oxidant treatment, Motapizone showed a 20% reduction in LPS-induced cytokine release from alveolar macrophages under oxidative stress conditions. Importantly, oxidative stress did not significantly affect this inhibitory effect [1].

Solubility Information

Solubility	DMSO: 1.8 mg/mL (6.91 mM),Sonication is recommended. (< 1 mg/ml refers to the product slightly soluble or insoluble)
------------	---

Preparing Stock Solutions

	1mg	5mg	10mg
1 mM	3.8414 mL	19.2071 mL	38.4143 mL
5 mM	0.7683 mL	3.8414 mL	7.6829 mL
10 mM	0.3841 mL	1.9207 mL	3.8414 mL
50 mM	0.0768 mL	0.3841 mL	0.7683 mL

Please select the appropriate solvent to prepare the stock solution, according to the solubility of the product in different solvents. Please use it as soon as possible.

Note: The dilution table applies only to solid products. For liquid products, please calculate the stock solution based on the stated concentration and/or density.

Reference

Milara J, et al. Oxidative stress-induced glucocorticoid resistance is prevented by dual PDE3/PDE4 inhibition in human alveolar macrophages. Clin Exp Allergy. 2011 Apr;41(4):535-46.

Borbe HO, et al. Inhibition of human platelet aggregation by motapizone via an increase in intracellular cAMP. Agents Actions Suppl. 1986;20:249-57.

Inhibitor · Natural Compounds · Compound Libraries · Recombinant Proteins

This product is for Research Use Only · Not for Human or Veterinary or Therapeutic Use

Tel:781-999-4286 E_mail:info@targetmol.com Address:34 Washington Street,Wellesley Hills,MA 02481