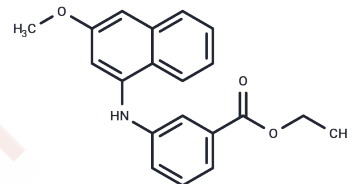


CDC25B-IN-1

Chemical Properties

CAS No. : 2374831-10-2
 Formula: C₂₀H₁₉NO₃
 Molecular Weight: 321.37
 Storage: Powder: -20°C for 3 years | In solvent: -80°C for 1 year
Actual storage temperature shall be subject to the COA.



Biological Description

Description	CDC25B-IN-1 is an inhibitor of CDC25B with a K_i of 8.5 μ M. CDC25B-IN-1 increases the G2/M phase by inhibiting cell proliferation and colony formation.
Targets(IC50)	Phosphatase

Solubility Information

Solubility	DMSO: 90 mg/mL (280.05 mM), Sonication is recommended. (< 1 mg/ml refers to the product slightly soluble or insoluble)
In vivo Formulation	10% DMSO+40% PEG300+5% Tween 80+45% Saline: 3.3 mg/mL (10.27 mM), Sonication is recommended. <i>Please add the solvents sequentially, clarifying the solution as much as possible before adding the next one. Dissolve by heating and/or sonication if necessary. Working solution is recommended to be prepared and used immediately. The formulation provided above is for reference purposes only. In vivo formulations may vary and should be modified based on specific experimental conditions.</i>

Preparing Stock Solutions

	1mg	5mg	10mg
1 mM	3.1117 mL	15.5584 mL	31.1168 mL
5 mM	0.6223 mL	3.1117 mL	6.2234 mL
10 mM	0.3112 mL	1.5558 mL	3.1117 mL
50 mM	0.0622 mL	0.3112 mL	0.6223 mL

Please select the appropriate solvent to prepare the stock solution, according to the solubility of the product in different solvents. Please use it as soon as possible.

Note: The dilution table applies only to solid products. For liquid products, please calculate the stock solution based on the stated concentration and/or density.

Reference

Cerchia C, et al. Discovery of Novel Naphthylphenylketone and Naphthylphenylamine Derivatives as Cell Division Cycle 25B (CDC25B) Phosphatase Inhibitors: Design, Synthesis, Inhibition Mechanism, and in Vitro Efficacy against Melanoma Cell Lines. J Med Chem. 2019 Aug 8;62(15):7089-7110.

Inhibitor · Natural Compounds · Compound Libraries · Recombinant Proteins

This product is for Research Use Only· Not for Human or Veterinary or Therapeutic Use

Tel:781-999-4286 E_mail:info@targetmol.com Address:34 Washington Street,Wellesley Hills,MA 02481