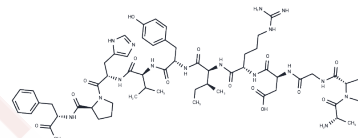


Crinia-angiotensin

Chemical Properties

CAS No. :	72007-47-7
Formula:	C60H86N16O15
Molecular Weight:	1271.42
Storage:	Powder: -20°C for 3 years In solvent: -80°C for 1 year Actual storage temperature shall be subject to the COA.



Biological Description

Description	Crinia-angiotensin is an Angiotensin II-like undecapeptide from the skin of Australian frog <i>Crinia georgiana</i> .
Targets(IC50)	Others

Preparing Stock Solutions

	1mg	5mg	10mg
1 mM	0.7865 mL	3.9326 mL	7.8652 mL
5 mM	0.1573 mL	0.7865 mL	1.573 mL
10 mM	0.0787 mL	0.3933 mL	0.7865 mL
50 mM	0.0157 mL	0.0787 mL	0.1573 mL

Please select the appropriate solvent to prepare the stock solution, according to the solubility of the product in different solvents. Please use it as soon as possible.

Note: The dilution table applies only to solid products. For liquid products, please calculate the stock solution based on the stated concentration and/or density.

Reference

- Calabrese AN, Markulic K, Musgrave IF, Guo H, Zhang L, Bowie JH. Structural and activity changes in three bioactive anuran peptides when Asp is replaced by isoAsp. *Peptides*. 2012 Dec;38(2):427-36. doi: 10.1016/j.peptides.2012.10.001. Epub 2012 Oct 13. PubMed PMID: 23069634.
- Andreazza HJ, Wang T, Bagley CJ, Hoffmann P, Bowie JH. Negative ion fragmentations of deprotonated peptides. The unusual case of isoAsp: a joint experimental and theoretical study. Comparison with positive ion cleavages. *Rapid Commun Mass Spectrom*. 2009 Jul;23(13):1993-2002. doi: 10.1002/rcm.4107. PubMed PMID: 19489040.
- Denton DA, Blair-West JR, McBurnie M, Osborne PG, Tarjan E, Williams RM, Weisinger RS. Angiotensin and salt appetite of BALB/c mice. *Am J Physiol*. 1990 Oct;259(4 Pt 2):R729-35. PubMed PMID: 2221138.
- Siragy H, Howell N, Rose CE Jr, Khosla MC, Peach MJ, Carey RM. Intrarenal effects of [Ala-Pro-Gly-(Ile3-Val5)] angiotensin II in the conscious dog. *Endocrinology*. 1988 Jan;122(1):359-63. PubMed PMID: 3275540.

Inhibitor · Natural Compounds · Compound Libraries · Recombinant Proteins

This product is for Research Use Only · Not for Human or Veterinary or Therapeutic Use

Tel:781-999-4286 E_mail:info@targetmol.com Address:34 Washington Street,Wellesley Hills,MA 02481