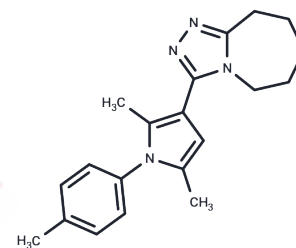


ML388

## Chemical Properties

CAS No. : 1537192-31-6  
 Formula: C<sub>20</sub>H<sub>24</sub>N<sub>4</sub>  
 Molecular Weight: 320.43  
 Storage: Powder: -20°C for 3 years | In solvent: -80°C for 1 year  
 Actual storage temperature shall be subject to the COA.



## Biological Description

Description	ML388 is an inhibitor of human NAD(+)- dependent 15- hydroxyprostaglandin dehydrogenase.
Targets(IC50)	Others,PGE Synthase

## Preparing Stock Solutions

	1mg	5mg	10mg
1 mM	3.1208 mL	15.604 mL	31.2081 mL
5 mM	0.6242 mL	3.1208 mL	6.2416 mL
10 mM	0.3121 mL	1.5604 mL	3.1208 mL
50 mM	0.0624 mL	0.3121 mL	0.6242 mL

Please select the appropriate solvent to prepare the stock solution, according to the solubility of the product in different solvents. Please use it as soon as possible.

Note: The dilution table applies only to solid products. For liquid products, please calculate the stock solution based on the stated concentration and/or density.

## Reference

Duveau DY, Yasgar A, Hu X, Kouznetsova J, Brimacombe KR, Kerns EH, Mathews L, Zhang X, Sun H, Ferrer M, Jadhav A, Simeonov A, Thomas CJ, Maloney DJ. Discovery of two small molecule inhibitors, ML387 and ML388, of human NAD(+)-dependent 15-hydroxyprostaglandin dehydrogenase. 2013 Dec 15 [updated 2015 Feb 11]. Probe Reports from the NIH Molecular Libraries Program [Internet]. Bethesda (MD): National Center for Biotechnology Information (US); 2010-. Available from <http://www.ncbi.nlm.nih.gov/books/NBK280041/> PubMed PMID: 25834895.

**Inhibitor · Natural Compounds · Compound Libraries · Recombinant Proteins**

This product is for Research Use Only. Not for Human or Veterinary or Therapeutic Use

Tel:781-999-4286 E\_mail:info@targetmol.com Address:34 Washington Street,Wellesley Hills,MA 02481