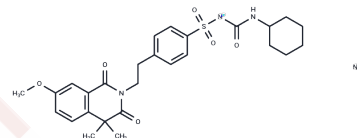


Gliquidone sodium

Chemical Properties

CAS No. : 62783-47-5
 Formula: C₂₇H₃₂N₃NaO₆S
 Molecular Weight: 549.61
 Storage: Powder: -20°C for 3 years | In solvent: -80°C for 1 year
 Actual storage temperature shall be subject to the COA.



Biological Description

Description	Gliquidone sodium is a hypoglycemic sulfonylurea which may protect the liver from injury from diabetes.
Targets(IC50)	Others

Preparing Stock Solutions

	1mg	5mg	10mg
1 mM	1.8195 mL	9.0974 mL	18.1947 mL
5 mM	0.3639 mL	1.8195 mL	3.6389 mL
10 mM	0.1819 mL	0.9097 mL	1.8195 mL
50 mM	0.0364 mL	0.1819 mL	0.3639 mL

Please select the appropriate solvent to prepare the stock solution, according to the solubility of the product in different solvents. Please use it as soon as possible.

Note: The dilution table applies only to solid products. For liquid products, please calculate the stock solution based on the stated concentration and/or density.

Reference

Yanardag R, Ozsoy-Sacan O, Orak H, Ozgey Y. Protective effects of glurenorm (gliquidone) treatment on the liver injury of experimental diabetes. Drug Chem Toxicol. 2005;28(4):483-97. PubMed PMID: 16298877.

Inhibitor · Natural Compounds · Compound Libraries · Recombinant Proteins

This product is for Research Use Only · Not for Human or Veterinary or Therapeutic Use

Tel:781-999-4286 E_mail:info@targetmol.com Address:34 Washington Street,Wellesley Hills,MA 02481