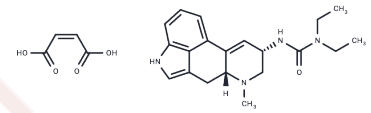


## Lisuride maleate

### Chemical Properties

CAS No. :	19875-60-6
Formula:	C <sub>24</sub> H <sub>30</sub> N <sub>4</sub> O <sub>5</sub>
Molecular Weight:	454.52
Storage:	Keep away from moisture Powder: -20°C for 3 years   In solvent: -80°C for 1 year <small>Actual storage temperature shall be subject to the COA.</small>



### Biological Description

Description	Lisuride maleate is a non-selective dopamine agonist and G-protein-biased 5-HT <sub>2A</sub> receptor agonist capable of blocking prolactin release. Lisuride maleate may be employed in studies of Parkinson's disease, depression, and hyperprolactinemia disorders.
Targets(IC <sub>50</sub> )	5-HT Receptor, Dopamine Receptor
In vivo	Lisuride maleate, at doses of 0.78 mg/kg (intraperitoneal injection) and 3.13 mg/kg (oral administration), exhibits a potency that is 3-4 times higher when administered intraperitoneally compared to oral administration [3]. When administered intraperitoneally (ip) at doses ranging from 0.78 to 3.13 mg/kg, Lisuride maleate effectively antagonizes the motor inhibition and hypothermia induced by reserpine [3]. The effects of Lisuride maleate (0.78-3.13 mg/kg, intraperitoneal injection) are similar to those of apomorphine and D-amphetamine, and it can induce significant hypothermia at doses as low as 0.10 mg/kg [3].

### Solubility Information

Solubility	H <sub>2</sub> O: 5 mM, Heating is recommended. Ethanol: 5 mM DMSO: 20 mg/mL (44 mM), Sonication is recommended. ( $< 1$ mg/ml refers to the product slightly soluble or insoluble)
In vivo Formulation	10% DMSO+40% PEG300+5% Tween 80+45% Saline: 1 mg/mL (2.2 mM), Sonication is recommended. <i>Please add the solvents sequentially, clarifying the solution as much as possible before adding the next one. Dissolve by heating and/or sonication if necessary. Working solution is recommended to be prepared and used immediately. The formulation provided above is for reference purposes only. In vivo formulations may vary and should be modified based on specific experimental conditions.</i>

### Preparing Stock Solutions

	1mg	5mg	10mg
1 mM	2.2001 mL	11.0006 mL	22.0012 mL
5 mM	0.440 mL	2.2001 mL	4.4002 mL
10 mM	0.220 mL	1.1001 mL	2.2001 mL
50 mM	0.044 mL	0.220 mL	0.440 mL

Please select the appropriate solvent to prepare the stock solution, according to the solubility of the product in different solvents. Please use it as soon as possible.

Note: The dilution table applies only to solid products. For liquid products, please calculate the stock solution based on the stated concentration and/or density.

### Reference

- Hofmann C , et al. Lisuride, a dopamine receptor agonist with 5-HT<sub>2B</sub> receptor antagonist properties: absence of cardiac valvulopathy adverse drug reaction reports supports the concept of a crucial role for 5-HT<sub>2B</sub> receptor agonism in cardiac valvular fibrosis.[J]. *Clinical Neuropharmacology*, 2006, 29(2):80-86.
- Jiang K, Liu X, Su R. Contrasting effects of DOI and lisuride on impulsive decision-making in delay discounting task. *Psychopharmacology*. 2022: 1-15.
- Zhu H, Liu X, Wang X, et al. Gβγ subunit inhibitor decreases DOM-induced head twitch response via the PLCβ/IP<sub>3</sub>/Ca<sup>2+</sup>/ERK and cAMP signaling pathways. *European Journal of Pharmacology*. 2023: 176038.
- Zweckberger K , et al. Anticonvulsive effects of the dopamine agonist lisuride maleate after experimental traumatic brain injury.[J]. *Neuroscience Letters*, 2010, 470(2):150-154.
- Wang Y, Jiang K, Yao Y, et al. A comparative study of effects of DOM and lisuride on neuronal activity in nucleus accumbens of freely moving rats. *European Journal of Pharmacology*. 2025, 987: 177198.
- Horowski R, et al. Direct dopaminergic action of lisuride hydrogen maleate, an ergot derivative, in mice. *Eur J Pharmacol*. 1976;36(2):373-383.

**Inhibitor · Natural Compounds · Compound Libraries · Recombinant Proteins**

This product is for Research Use Only · Not for Human or Veterinary or Therapeutic Use

Tel:781-999-4286 E\_mail:info@targetmol.com Address:34 Washington Street,Wellesley Hills,MA 02481