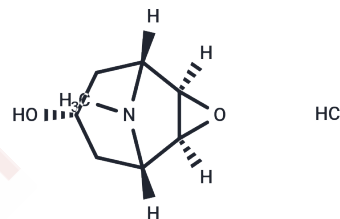


Scopine hydrochloride

Chemical Properties

CAS No. :	85700-55-6
Formula:	C ₈ H ₁₃ NO ₂ ·HCl
Molecular Weight:	191.66
Storage:	Store at low temperature Powder: -20°C for 3 years In solvent: -80°C for 1 year <small>Actual storage temperature shall be subject to the COA.</small>



Biological Description

Description	Scopine hydrochloride is a brain-targeting scopolamine metabolite that enhances intracerebral exposure and anti-glioblastoma activity of chlorambucil, applicable for targeted treatment of brain gliomas.
Targets(IC50)	Drug Metabolite

Solubility Information

Solubility	DMSO: 20 mg/mL (104.35 mM),Sonication is recommended. H ₂ O: ≥ 80 mg/mL,Sonication is recommended. Ethanol: <1 mg/mL (<1 mM), (< 1 mg/ml refers to the product slightly soluble or insoluble)
In vivo Formulation	10% DMSO+40% PEG300+5% Tween-80+45% Saline: 2 mg/mL (10.44 mM),Sonication is recommended. <i>Please add the solvents sequentially, clarifying the solution as much as possible before adding the next one. Dissolve by heating and/or sonication if necessary. Working solution is recommended to be prepared and used immediately. The formulation provided above is for reference purposes only. In vivo formulations may vary and should be modified based on specific experimental conditions.</i>

Preparing Stock Solutions

	1mg	5mg	10mg
1 mM	5.2176 mL	26.0879 mL	52.1757 mL
5 mM	1.0435 mL	5.2176 mL	10.4351 mL
10 mM	0.5218 mL	2.6088 mL	5.2176 mL
50 mM	0.1044 mL	0.5218 mL	1.0435 mL

Please select the appropriate solvent to prepare the stock solution, according to the solubility of the product in different solvents. Please use it as soon as possible.

Note: The dilution table applies only to solid products. For liquid products, please calculate the stock solution based on the stated concentration and/or density.

Reference

Wang X, et al. Scopine as a novel brain-targeting moiety enhances the brain uptake of chlorambucil. *Bioconjug Chem.* 2014 Nov 19;25(11):2046-54.

Inhibitor · Natural Compounds · Compound Libraries · Recombinant Proteins

This product is for Research Use Only · Not for Human or Veterinary or Therapeutic Use

Tel:781-999-4286 E_mail:info@targetmol.com Address:34 Washington Street,Wellesley Hills,MA 02481