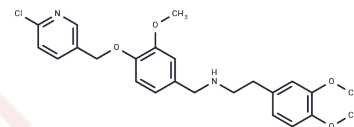


SBE13

Chemical Properties

CAS No. : 775294-82-1
 Formula: C₂₄H₂₇ClN₂O₄
 Molecular Weight: 442.94
 Storage: Powder: -20°C for 3 years | In solvent: -80°C for 1 year
 Actual storage temperature shall be subject to the COA.



Biological Description

Description	SBE13 is a selective and potent Plk1 inhibitor (IC ₅₀ : 200 pM) with weak effects on Plk2 (IC ₅₀ : >66 μM) and Plk3 (IC ₅₀ : 875 nM).
Targets(IC ₅₀)	Others, Autophagy, PLK

Preparing Stock Solutions

	1mg	5mg	10mg
1 mM	2.2576 mL	11.2882 mL	22.5764 mL
5 mM	0.4515 mL	2.2576 mL	4.5153 mL
10 mM	0.2258 mL	1.1288 mL	2.2576 mL
50 mM	0.0452 mL	0.2258 mL	0.4515 mL

Please select the appropriate solvent to prepare the stock solution, according to the solubility of the product in different solvents. Please use it as soon as possible.

Note: The dilution table applies only to solid products. For liquid products, please calculate the stock solution based on the stated concentration and/or density.

Inhibitor · Natural Compounds · Compound Libraries · Recombinant Proteins

This product is for Research Use Only · Not for Human or Veterinary or Therapeutic Use

Tel: 781-999-4286 E_mail: info@targetmol.com Address: 34 Washington Street, Wellesley Hills, MA 02481