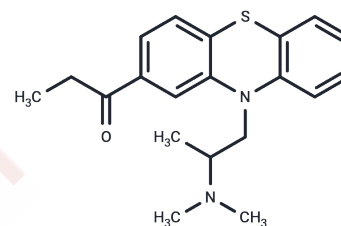


## Propiomazine

## Chemical Properties

CAS No. :	362-29-8
Formula:	C <sub>20</sub> H <sub>24</sub> N <sub>2</sub> O <sub>2</sub> S
Molecular Weight:	340.48
Storage:	Powder: -20°C for 3 years   In solvent: -80°C for 1 year Actual storage temperature shall be subject to the COA.



## Biological Description

Description	Propiomazine is an orally active antihistamine compound with sedative effects, used for controlling insomnia in neurological diseases.
Targets(IC50)	Apoptosis,Histamine Receptor
In vivo	Single intravenous administration of Propiomazine (0.31, 0.62, 1.25, 2.5, 5, 10 or 20 mg/kg) significantly increased plasma prolactin concentration in male rats. The increases produced by higher doses (5, 10, and 20 mg/kg) were greater in magnitude and duration than those produced by lower doses. [1] Propiomazine (25 mg/kg, i.p.) had a protective effect on CCL <sub>4</sub> -induced liver injury in rats. [2]

## Preparing Stock Solutions

	1mg	5mg	10mg
1 mM	2.937 mL	14.6852 mL	29.3703 mL
5 mM	0.5874 mL	2.937 mL	5.8741 mL
10 mM	0.2937 mL	1.4685 mL	2.937 mL
50 mM	0.0587 mL	0.2937 mL	0.5874 mL

Please select the appropriate solvent to prepare the stock solution, according to the solubility of the product in different solvents. Please use it as soon as possible.

Note: The dilution table applies only to solid products. For liquid products, please calculate the stock solution based on the stated concentration and/or density.

## Reference

- Fayez M, et al. Effect of propiomazine on plasma prolactin in the rat: counteraction by L-dopa. Proc Soc Exp Biol Med. 1985 Apr;178(4):606-9.
- Serratoni FT, et al. Promethazine protection in carbon tetrachloride liver injury. An electron microscopic study. Arch Pathol. 1969 Jan;87(1):46-51.

**Inhibitor · Natural Compounds · Compound Libraries · Recombinant Proteins**

This product is for Research Use Only · Not for Human or Veterinary or Therapeutic Use

Tel:781-999-4286 E\_mail:info@targetmol.com Address:34 Washington Street,Wellesley Hills,MA 02481