

ethyl rosmarinate

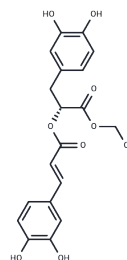
Chemical Properties

CAS No. : 174591-47-0

Formula: C₂₀H₂₀O₈

Molecular Weight: 388.37

Storage: Keep away from direct sunlight, Store at low temperature, Keep away from moisture
 Powder: -20°C for 3 years | In solvent: -80°C for 1 year
 Actual storage temperature shall be subject to the COA.



Biological Description

Description	ethyl rosmarinate inhibit the activity of tyrosinase, α -glucosidase, and matrix metalloproteinase-1 (MMP-1).
Targets(IC50)	MMP, Glucosidase, Tyrosinase

Solubility Information

Solubility	DMSO: 55 mg/mL (141.62 mM), Sonication is recommended. H ₂ O: 10 mg/mL (25.75 mM), Sonication is recommended. (< 1 mg/ml refers to the product slightly soluble or insoluble)
In vivo Formulation	10% DMSO+40% PEG300+5% Tween 80+45% Saline: 2 mg/mL (5.15 mM), Sonication is recommended. <i>Please add the solvents sequentially, clarifying the solution as much as possible before adding the next one. Dissolve by heating and/or sonication if necessary. Working solution is recommended to be prepared and used immediately. The formulation provided above is for reference purposes only. In vivo formulations may vary and should be modified based on specific experimental conditions.</i>

Preparing Stock Solutions

	1mg	5mg	10mg
1 mM	2.5749 mL	12.8743 mL	25.7486 mL
5 mM	0.515 mL	2.5749 mL	5.1497 mL
10 mM	0.2575 mL	1.2874 mL	2.5749 mL
50 mM	0.0515 mL	0.2575 mL	0.515 mL

Please select the appropriate solvent to prepare the stock solution, according to the solubility of the product in different solvents. Please use it as soon as possible.

Note: The dilution table applies only to solid products. For liquid products, please calculate the stock solution based on the stated concentration and/or density.

Reference

Lin L , Dong Y , Zhao H , et al. Comparative evaluation of rosmarinic acid, methyl rosmarinate and pedalin isolated from *Rabdosia serra* (MAXIM.) HARA as inhibitors of tyrosinase and α -glucosidase[J]. Food Chemistry, 2011, 129(3):884-889.

Inhibitor · Natural Compounds · Compound Libraries · Recombinant Proteins

This product is for Research Use Only · Not for Human or Veterinary or Therapeutic Use

Tel:781-999-4286 E_mail:info@targetmol.com Address:34 Washington Street,Wellesley Hills,MA 02481