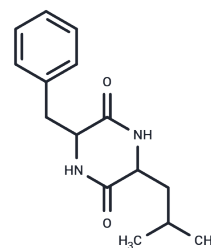


Cyclo(Phe-Leu)

Chemical Properties

CAS No. :	3354-31-2
Formula:	C ₁₅ H ₂₀ N ₂ O ₂
Molecular Weight:	260.33
Storage:	Powder: -20°C for 3 years In solvent: -80°C for 1 year Actual storage temperature shall be subject to the COA.



Biological Description

Description	Cyclo(Phe-Leu) is a new cell cycle inhibitor.
In vitro	To find the cell cycle inhibitors from the metabolites of Streptomyces flavoretus 18522. METHODS AND RESULTS: Activity-guided isolation was performed on the chloroform extract of the fermentation broth and mycelia of Streptomyces flavoretus 18522 by using its FT210 cells. Compounds were isolated through various chromatographic methods and elucidated by spectroscopic means. The flow cytometry was used to evaluate the cell cycle inhibiting activity of the fractions and compounds. Six cyclic dipeptides were obtained and identified as cyclo(Ala-Leu)(1), Cyclo(Ile-Ala)(2), cyclo(Ala-Val)(3), Cyclo(Phe-Leu)(4), cyclo(Ala-Pro)(5) and cyclo(Phe-Val)(6). Conclusions Compounds 1-6 are reported as new cell cycle inhibitors for the first time.

Preparing Stock Solutions

	1mg	5mg	10mg
1 mM	3.8413 mL	19.2064 mL	38.4128 mL
5 mM	0.7683 mL	3.8413 mL	7.6826 mL
10 mM	0.3841 mL	1.9206 mL	3.8413 mL
50 mM	0.0768 mL	0.3841 mL	0.7683 mL

Please select the appropriate solvent to prepare the stock solution, according to the solubility of the product in different solvents. Please use it as soon as possible.

Note: The dilution table applies only to solid products. For liquid products, please calculate the stock solution based on the stated concentration and/or density.

Reference

Cyclic dipeptides as new cell cycle inhibitors produced by Streptomyces flavoretus 18522 Journal of Shenyang Pharmaceutical University, 2015 (2):107 -10.

Inhibitor · Natural Compounds · Compound Libraries · Recombinant Proteins

This product is for Research Use Only · Not for Human or Veterinary or Therapeutic Use

Tel:781-999-4286 E_mail:info@targetmol.com Address:34 Washington Street,Wellesley Hills,MA 02481