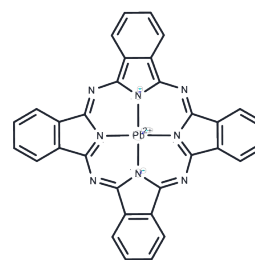


Lead phthalocyanine

Chemical Properties

CAS No. :	15187-16-3
Formula:	C ₃₂ H ₁₆ N ₈ Pb
Molecular Weight:	719.70
Storage:	Powder: -20°C for 3 years In solvent: -80°C for 1 year Actual storage temperature shall be subject to the COA.



Biological Description

Description	Lead phthalocyanine, a selective carrier, can be used for the preparation of a cysteine-selective electrode.
Targets(IC50)	Others

Preparing Stock Solutions

	1mg	5mg	10mg
1 mM	1.3895 mL	6.9473 mL	13.8947 mL
5 mM	0.2779 mL	1.3895 mL	2.7789 mL
10 mM	0.1389 mL	0.6947 mL	1.3895 mL
50 mM	0.0278 mL	0.1389 mL	0.2779 mL

Please select the appropriate solvent to prepare the stock solution, according to the solubility of the product in different solvents. Please use it as soon as possible.

Note: The dilution table applies only to solid products. For liquid products, please calculate the stock solution based on the stated concentration and/or density.

Reference

- Cai Y, Xu S, Qiao X, Wang L, Liu Y, Wang T, Xu X. Chirality control of nonplanar lead phthalocyanine (PbPc) and its potential application in high-density storage: a theoretical investigation. *Phys Chem Chem Phys*. 2015 Sep 28;17(36):23651-6. doi: 10.1039/c5cp03355a. PubMed PMID: 26299939.
- Dexters W, Bourgeois E, Nešládek M, D'Haen J, Goovaerts E, Haenen K. Molecular orientation of lead phthalocyanine on (100) oriented single crystal diamond surfaces. *Phys Chem Chem Phys*. 2015 Apr 21;17(15):9619-23. doi: 10.1039/c5cp00174a. PubMed PMID: 25779759.
- Kim TM, Shim HS, Choi MS, Kim HJ, Kim JJ. Multilayer epitaxial growth of lead phthalocyanine and C(70) using CuBr as a templating layer for enhancing the efficiency of organic photovoltaic cells. *ACS Appl Mater Interfaces*. 2014 Mar 26;6(6):4286-91. doi: 10.1021/am405946m. Epub 2014 Mar 14. PubMed PMID: 24575946.
- Nizovtsev AS, Kozlova SG. Electronic rearrangements during the inversion of lead phthalocyanine. *J Phys Chem A*. 2013 Jan 17;117(2):481-8. doi: 10.1021/jp3108107. Epub 2013 Jan 7. PubMed PMID: 23244509.

Inhibitor · Natural Compounds · Compound Libraries · Recombinant Proteins

This product is for Research Use Only · Not for Human or Veterinary or Therapeutic Use

Tel:781-999-4286 E_mail:info@targetmol.com Address:34 Washington Street,Wellesley Hills,MA 02481