

Arg-Gly-Glu-Ser

Chemical Properties

CAS No. : 93674-97-6

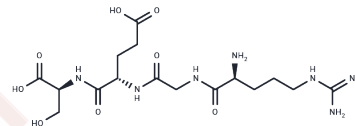
Formula: C₁₆H₂₉N₇O₈

Molecular Weight: 447.44

Keep away from moisture

Storage: Powder: -20°C for 3 years | In solvent: -80°C for 1 year

Actual storage temperature shall be subject to the COA.



Biological Description

Description	Arg-Gly-Glu-Ser (RGDS) is an RGD-related peptide used as a control for the activity of fibrinogen binding to activated platelets.
Targets(IC50)	Integrin

Solubility Information

Solubility	H ₂ O: 2 mg/mL (4.47 mM), Sonication and heating are recommended. (< 1 mg/ml refers to the product slightly soluble or insoluble)
------------	---

Preparing Stock Solutions

	1mg	5mg	10mg
1 mM	2.2349 mL	11.1747 mL	22.3494 mL
5 mM	0.447 mL	2.2349 mL	4.4699 mL
10 mM	0.2235 mL	1.1175 mL	2.2349 mL
50 mM	0.0447 mL	0.2235 mL	0.447 mL

Please select the appropriate solvent to prepare the stock solution, according to the solubility of the product in different solvents. Please use it as soon as possible.

Note: The dilution table applies only to solid products. For liquid products, please calculate the stock solution based on the stated concentration and/or density.

Reference

Moon C, et al. Synthetic RGDS peptide attenuates lipopolysaccharide-induced pulmonary inflammation by inhibiting integrin signaled MAP kinase pathways. *Respir Res.* 2009 Mar 9;10:18.

Inhibitor · Natural Compounds · Compound Libraries · Recombinant Proteins

This product is for Research Use Only · Not for Human or Veterinary or Therapeutic Use

Tel:781-999-4286 E_mail:info@targetmol.com Address:34 Washington Street,Wellesley Hills,MA 02481