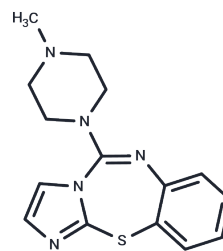


Pentiapine

Chemical Properties

CAS No. :	81382-51-6
Formula:	C ₁₅ H ₁₇ N ₅ S
Molecular Weight:	299.39
Storage:	Powder: -20°C for 3 years In solvent: -80°C for 1 year <small>Actual storage temperature shall be subject to the COA.</small>



Biological Description

Description	Pentiapine (CGS 10746) is a novel inhibitor of dopamine release.
Targets(IC50)	Dopamine Receptor
In vivo	Pentiapine effectively reduces motor activity in mice, both independently and in diminishing morphine-induced hyperactivity, on a dose-dependent basis. Analysis through Newman-Keuls post-hoc comparisons reveals that mice administered morphine and saline exhibit higher activity levels compared to those treated with incremental doses of 2 to 32 mg/kg of Pentiapine, with significant activity reductions observed at the 2 (P<0.05) and 32 (P<0.01) mg/kg levels. Additionally, lower doses of Pentiapine (0.5, 1, and 2 mg/kg) result in more activity than higher doses (4 to 32 mg/kg) in morphine-treated groups (P<0.01)[1]. A 30 mg/kg dose of Pentiapine completely inhibits the conditioned place preference (CPP) induced by methylenedioxymethamphetamine (MDMA) and prevents the establishment of a cocaine-induced CPP[2], demonstrating its potential in mitigating addictive behaviors.

Solubility Information

Solubility	DMSO: 100 mg/mL (334.01 mM), Sonication is recommended. (< 1 mg/ml refers to the product slightly soluble or insoluble)
------------	--

Preparing Stock Solutions

	1mg	5mg	10mg
1 mM	3.3401 mL	16.7006 mL	33.4012 mL
5 mM	0.668 mL	3.3401 mL	6.6802 mL
10 mM	0.334 mL	1.6701 mL	3.3401 mL
50 mM	0.0668 mL	0.334 mL	0.668 mL

Please select the appropriate solvent to prepare the stock solution, according to the solubility of the product in different solvents. Please use it as soon as possible.

Note: The dilution table applies only to solid products. For liquid products, please calculate the stock solution based on the stated concentration and/or density.

Reference

Manzanedo C, et al. Effects of CGS 10746B on hyperactivity and place preference induced by morphine. *Behav Brain Res.* 2001 Nov 29;126(1-2):23-32.

Bilsky EJ, et al. CGS 10746B, a novel dopamine release inhibitor, blocks the establishment of cocaine and MDMA conditioned place preferences. *Pharmacol Biochem Behav.* 1998 Jan;59(1):215-20.

Inhibitor · Natural Compounds · Compound Libraries · Recombinant Proteins

This product is for Research Use Only · Not for Human or Veterinary or Therapeutic Use

Tel:781-999-4286 E_mail:info@targetmol.com Address:34 Washington Street,Wellesley Hills,MA 02481