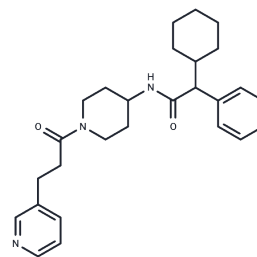


C3a Receptor Agonist

Chemical Properties

CAS No. :	944997-60-8
Formula:	C ₂₇ H ₃₅ N ₃ O ₂
Molecular Weight:	433.59
Storage:	Powder: -20°C for 3 years In solvent: -80°C for 1 year Actual storage temperature shall be subject to the COA.



Biological Description

Description	C3a Receptor Agonist (C3a receptor agonist 1) binds the G protein-coupled C3a receptors (C3aRs) in the immune system complement pathway. Activation of C3aR prevents neutrophils from being mobilized in a model of intestinal ischemia-reperfusion injury. C3aRs are expressed on neural progenitor cells and immature neurons in adult mice. C3a stimulates differentiation of neural progenitor cells in vitro.
Targets(IC50)	Complement System

Solubility Information

Solubility	DMF: 30 mg/mL (69.19 mM),Sonication is recommended. DMSO: 40 mg/mL (92.25 mM),Sonication is recommended. Ethanol: 30 mg/mL (69.19 mM),Sonication is recommended. (< 1 mg/ml refers to the product slightly soluble or insoluble)
------------	---

Preparing Stock Solutions

	1mg	5mg	10mg
1 mM	2.3063 mL	11.5316 mL	23.0633 mL
5 mM	0.4613 mL	2.3063 mL	4.6127 mL
10 mM	0.2306 mL	1.1532 mL	2.3063 mL
50 mM	0.0461 mL	0.2306 mL	0.4613 mL

Please select the appropriate solvent to prepare the stock solution, according to the solubility of the product in different solvents. Please use it as soon as possible.

Note: The dilution table applies only to solid products. For liquid products, please calculate the stock solution based on the stated concentration and/or density.

Reference

Klos, A., Wende, E., Wareham, K.J., et al. International union of basic and clinical pharmacology. LXXXVII. Complement peptide C5a, C4a, and C3a receptors. *Pharmacol. Rev.* 65(1), 500-543 (2013).

Wu, M.C.L., Brennan, F.H., Lynch, J.P.L., et al. The receptor for complement component C3a mediates protection from intestinal ischemia-reperfusion injuries by inhibiting neutrophil mobilization. *Proc. Natl. Acad. Sci. USA* 110(23), 9439-9444 (2013).

Rahpaymai, Y., Hietala, M.A., Wilhelmsson, U., et al. Complement: A novel factor in basal and ischemia-induced neurogenesis. *EMBO J.* 25(6), 1364-1374 (2006).

Shinjyo, N., Ståhlberg, A., Dragunow, M., et al. Complement-derived anaphylatoxin C3a regulates in vitro differentiation and migration of neural progenitor cells. *Stem Cells* 27(11), 2824-2832 (2009).

Inhibitor · Natural Compounds · Compound Libraries · Recombinant Proteins

This product is for Research Use Only · Not for Human or Veterinary or Therapeutic Use

Tel:781-999-4286 E_mail:info@targetmol.com Address:34 Washington Street,Wellesley Hills,MA 02481