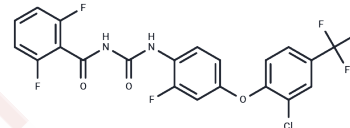


## Flufenoxuron

## Chemical Properties

CAS No. :	101463-69-8
Formula:	C <sub>21</sub> H <sub>11</sub> ClF <sub>6</sub> N <sub>2</sub> O <sub>3</sub>
Molecular Weight:	488.77
Storage:	Powder: -20°C for 3 years   In solvent: -80°C for 1 year Actual storage temperature shall be subject to the COA.



## Biological Description

Description	Flufenoxuron (Cascade) is a benzoylurea pesticide that inhibits chitin synthesis in insects. Flufenoxuron is toxic and suppresses the proliferation of testicular cells by targeting mitochondria in mice.
Targets(IC50)	Others

## Solubility Information

Solubility	DMSO: 200 mg/mL (409.19 mM),Sonication is recommended. (< 1 mg/ml refers to the product slightly soluble or insoluble)
In vivo Formulation	10% DMSO+40% PEG300+5% Tween 80+45% Saline: 5 mg/mL (10.23 mM),Sonication is recommended. <i>Please add the solvents sequentially, clarifying the solution as much as possible before adding the next one. Dissolve by heating and/or sonication if necessary. Working solution is recommended to be prepared and used immediately. The formulation provided above is for reference purposes only. In vivo formulations may vary and should be modified based on specific experimental conditions.</i>

## Preparing Stock Solutions

	1mg	5mg	10mg
1 mM	2.046 mL	10.2298 mL	20.4595 mL
5 mM	0.4092 mL	2.046 mL	4.0919 mL
10 mM	0.2046 mL	1.023 mL	2.046 mL
50 mM	0.0409 mL	0.2046 mL	0.4092 mL

Please select the appropriate solvent to prepare the stock solution, according to the solubility of the product in different solvents. Please use it as soon as possible.

Note: The dilution table applies only to solid products. For liquid products, please calculate the stock solution based on the stated concentration and/or density.

Reference

Sunwoo Park, et al. Toxic Effects of Flufenoxuron on Development and Vascular Formation During Zebrafish Embryogenesis. *Aquat Toxicol.* 2019 Nov;216:105307.

**Inhibitor · Natural Compounds · Compound Libraries · Recombinant Proteins**

This product is for Research Use Only · Not for Human or Veterinary or Therapeutic Use

Tel:781-999-4286 E\_mail:info@targetmol.com Address:34 Washington Street,Wellesley Hills,MA 02481